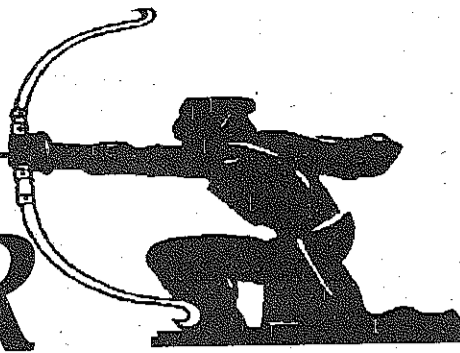


THE ARCHER



Mini M25 EXPRESS Cabs
BOOK NOW FOR XMAS
0181-959 2222

- ◆ 24 hr service - 365 days
- ◆ Lady drivers / no smoking available

The Courier & Passenger Group
that really cares!

A community newspaper for East Finchley run entirely by volunteers.

August 1995 No. 30

20p

Bottle Bank Heist

Some East Finchley residents are astonished by the re-location of the bottle and paper bank facilities which were, until recently, located outside Budgens on the High Road.

Apparently, the removal and re-location has been made in order to release parking space on the High Road in the wake of recent road layout improvements and also to facilitate 'Disabled Only' parking bays. Many residents consider the

new location at East Finchley tube station fails to pass the test of practicality and, as many people in the area do not use the tube on a regular basis, see the re-location to this new site as a disincentive. Others though, particularly disabled residents, feel that access to the banks has been made easier. A disabled resident comments that after parking the car outside Budgens, it was difficult to manoeuvre around the safety railings to

make a deposit in the banks and use the shops.

Yellow peril

Do you believe putting the banks down by the tube is a sensible strategy or should the council add to the facility in the High Road rather than replace it? Can you suggest a better location?

We are particularly interested in receiving the comments of our disabled readers:

Have the improvements made access to shops and services in the High Road easier? Are the disabled bays working or was parking easier when yellow line restrictions were in force?

We will pass your comments to Barnet Council.

Please let us have your views on this by contacting *The Archer* by post, telephone or e-mail.

Lethal legacy

by Len Willcocks

In Briar Close, East Finchley, anxious residents have been worried about the effects of asbestos which is believed to have been dumped there illegally over 20 years ago.

Now trees, rose bushes and shrubs have had to be destroyed so that contaminated soil can be removed.

The asbestos problem only came to light recently and residents contacted Barnet Council.

The Barnet Environmental Health Officer was called and investigations were started.

A mother whose 5-year old son, Liam, played regularly on the contaminated bank noticed the asbestos, strange-looking white stuff.

A month ago contractors started to work on the bank to remove broken asbestos cement but during this clean-up operation the more dangerous blue asbestos was found.

Playing unsafe

Residents were horrified to learn that the bank where their children had played, and where they often took soil for their own plant pots and patios, was so contaminated.

One resident, who was shown samples of the asbestos, said "I had been picking it out of the soil for years with my hands. I thought it was just polystyrene packaging."

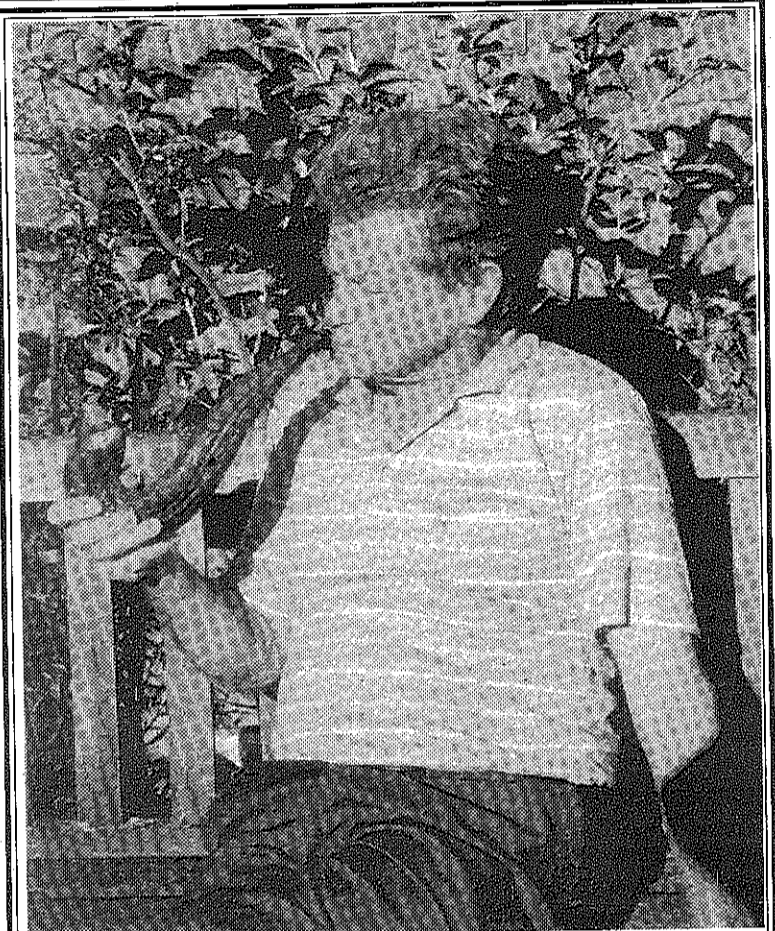
Sean Brickeley, warden of the Housing Association flats said "We inform residents of new developments weekly. Safety-wise we follow all the instructions of the Health and Safety Executive.

"We will begin a re-planting programme when the work is finished, planting more trees and saplings."

Animal Issue

- see inside:

- Puma in N2? ...page 6
- Bunny, terror of delivery men ...page 4
- Pigeon Corner, we want your views ...page 2



Salad Days

Picture and story: David Tupman
That's Life

Visiting East Finchley from Perth, Australia, Jack Metcalfe had thought he had seen everything on his many travels around the world - but a cucumber shaped like a pipe? This strangely-shaped salad vegetable came from the Continental Store in the High Road.

Tell *The Archer* if you come across anything odd in the vegetable or fruit line, or, better still, send a photograph.

DENNIS ROSEN & ASSOCIATES

*Friendly Local Dental Practice

*Caring Comprehensive Team

*Full Range Of Cosmetic & Restorative Treatments.

*Hygienist

*Families, Nervous Patients and Children Especially Welcome

*Emergencies Seen Same Day

Accepting New N. H. S. Patients.

Mon-Thurs 9-5-30.

ALT Sat 9-1-00

Tel 0181-340 4878/0181-340 8687

82 North Road Highgate London N6



79 High Road, East Finchley

For

BEDDING PLANTS, SHRUBS, CONIFERS, ROSES
SEEDS, COMPOSTS, SUNDRIES
FLOWERS AND HOUSEPLANTS
BOUQUETS AND FLORAL TRIBUTES

Opening Soon

Our new gift shop with dried and silk flowers,
balloons, china
All types of dried herbs and herbal teas
Pot-Pourris

OUR BUSINESS IS GROWING FOR YOU!

Bernard
TOMKINS

36 High Road
East Finchley N2 9PJ

0181-883 0033

Properties urgently required - now is the time to sell!

Estate Agents and Valuers • Established 1873

Are you paying too much for your building insurance?

JUST LOOK AT THESE RATES!

£100,000 cover from £136 • £200,000 cover from £272

We also specialise in Car, Bike and Household Contents insurance

Phone Now For A Quotation

RAMPDALE LIMITED INSURANCE BROKERS - 0181-442 0767

127 HighRoad • East Finchley • London N2 8AJ

Member of
BIIBA
British Insurance
& Investment Brokers Assoc.