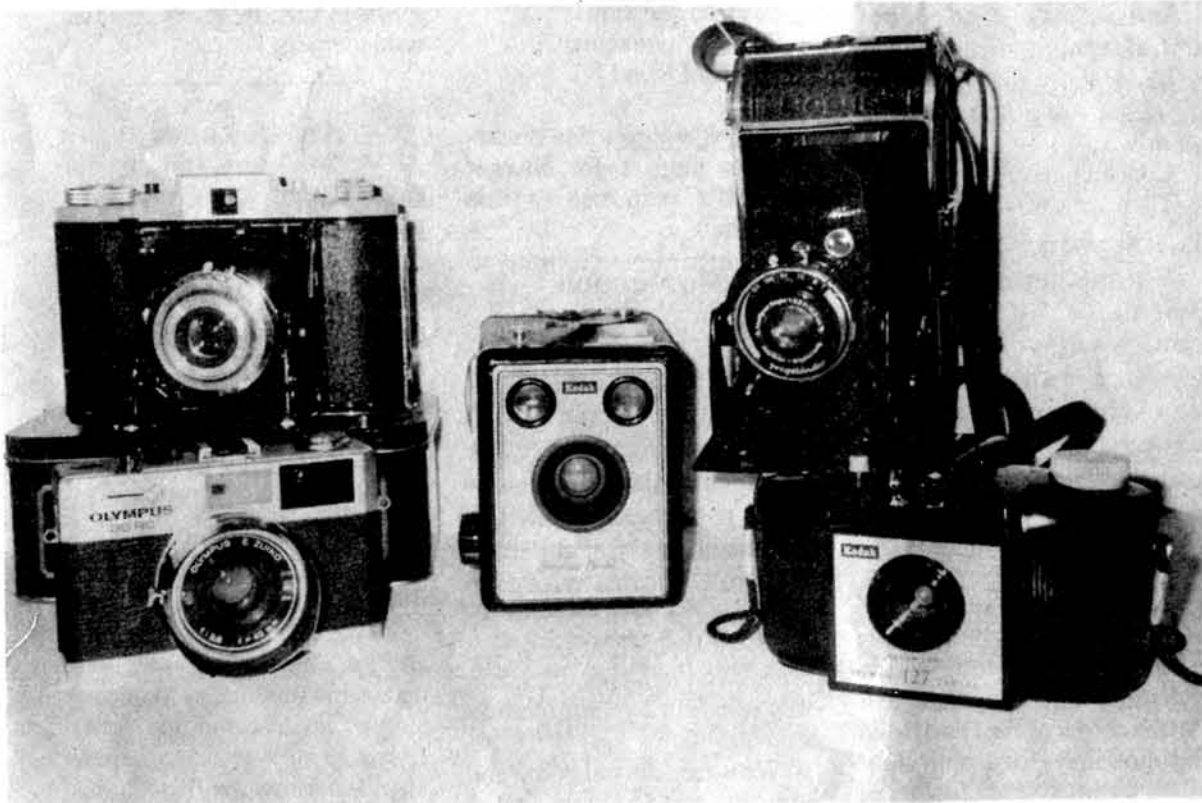




Local Society Spotlight



Antique cameras from the Frances McCrane camera collection

Flash, Bang, Wallop

Story & photo David Tupman

The thriving Hampstead Photographic Society (HPS) welcomes new members from East Finchley. Founded in 1937, the society meets every Tuesday at 8:00pm in the crypt of St. John's Church, Hampstead.

Following a recent successful exhibition of photographs at the Phoenix Cinema the HPS has a summer exhibition at

Swiss Cottage Library from 2nd September.

The HPS's 1995-96 programme and newsletter are

available at local camera shops and libraries or telephone Paul Mosby on 0181-444 9830 or Joan Spencer on 0171-794 6622

Fare deal

The proposal from Anthony Attard for the introduction of concessionary fares on public transport elicited responses from various MPs.

Here is the contribution from Mr. Stephen Norris, Minister of the Department of Transport:

"The possibility of extending travel concessions to unemployed people has been considered on a number of occasions. The Government remains of the view that this would not be an appropriate way of helping unemployed people. It would impose heavy financial burdens on taxpayers and local council tax payers. It would also be extremely difficult, if not impossible, to ensure that such a concession were only used for journeys directly connected with the search for work.

The Employment Service is

keen to make sure all unemployed people have as much practical help as possible. In recognition of this, all Jobcentres offer a structured and coherent advisory and information service, which is aimed at helping clients back to work quickly.

This service starts as soon as the client makes a new claim for benefit and intensifies as unemployment lengthens and finding work becomes more difficult.

I hope that this is helpful."

The campaign goes on and *The Archer* welcomes readers' comments.

Church News

On Sunday 17th September at East Finchley Methodist Church there is a Harvest Family Festival Service at 10:30am.

Harvest Thanksgiving at St. Margaritas United Reform Church, Victoria Avenue N3 is on Sunday 24th September at 11:00am.

There will be a Harvest Supper with a difference with speaker Hugh Brown, a Prison Chaplain in Japan. He has a history of involvement with the IRA before finding new life in Christ.

For tickets for this talk to be held at Christ Church (Anglican), High Road, North Finchley N12, telephone Shelley Alexander on 445 2532.

AWAYDAYS!

Palace Tours

Alexandra Palace, the famous North London landmark, received a set-back when the Millennium Committee, a quango established to allocate £11.6bl. of National Lottery money over the next four years, rejected the Palace plan to create a museum showing the history of TV.

Alexandra Palace is the birthplace of television. The very first TV transmission was broadcast from the Palace in 1936.

Anyone wishing to see the television studios can view them on a tour which takes place on the first Saturday of each month.

The tour starts at 2:00pm and lasts for two hours.

It is advisable to book in advance as places on the tour are strictly limited.

For information phone 0181-348 7563, or for information contact Tours Helpline on 0181-365 2121

Alpha better

Alpha is for anyone interested in finding out more about the Christian faith. People of all ages are welcome.

An Alpha course takes place each Thursday at 7:00pm at All Saints Church, Durham Road, N2 off Fortis Green. Each Thursday starts with a hot meal.

There is no charge.

If you are interested please contact Fr. Derek Brown at 45 Oakdene Park N3 1EU or ring him on 0181-343 4154.



Real Food at Welch's

If you have been intrigued by the menus and messages on the blackboard outside Welch's Ale House, you will find the people behind it even more interesting.

John Dacam and Kevin Finn met through *The Archer*. When the production team started to meet at Welch's they found well-equipped catering facilities but no chef. Both being in need of new impetus and keen on cooking, they teamed-up to establish a "real food" catering service in the already popular "real ale" house.

Neither had a formal training, but both appreciate good, freshly-cooked food.

Kevin's wife is Malaysian and he describes the menu as "Sino-Franglais". They delight in putting, say, an exotic smoked salmon soup on the same menu as spotted dick and include great curries and Mediterranean dishes in their repertoire.

Prices are realistic and cover not only generous platefuls, but second helpings as well. Coffee is excellent and refills are the norm.

There is also always an excellent cold buffet including sal-

ads, cheese, quiches, patés and made-to-order sandwiches.

Fat and Finn

Perhaps the nicest things about the whole enterprise are the friendly, relaxed atmosphere and warm unfussy welcome at Welch's. You always come out feeling better than when you went in!

Ready to try anything different, 'Real Food at Welch's' established themselves in the eyes of East Finchley residents when they put on a ration-book lunch for pensioners for one-and-sixpence, to celebrate VE Day. Since then, there have been barbecues, Saturday snacks, and now Sunday roasts at tea-time (4:00 to 7:00pm)

More new ideas are in the pipeline so if you have any suggestions or requests for special features go and see John and Kevin - they'll be happy to talk.

Buy a bench

Sad because the benches have been removed from Pigeon Corner? Well, don't be. One way of getting them back is to buy a commemorative seat (or two) from Barnet Council! Call 0181 359 4334 for further details.

NEW FAX NUMBER

0181-444 8093

or

e-mail

archer@finn.netkonect.co.uk

FACTS

The highest officially recorded sea wave measured 34 metres or 112ft.

The Blue Whale gives off a low frequency call which reaches as much as 188 decibels or three pneumatic drills in volume.

COMPUTER CLUB

Next meeting on Wednesday 27th October at WELCH'S High Road East Finchley N2

CHESS Pawn brokers

The one hundred-year-old Muswell Hill Chess Club is appealing for new members. The club meets every Thursday at 7:30pm at the Tetherdown United Reform Church Hall at the top end of Tetherdown, N10. Chess players of all ages and standards are welcome.

More information from Will Ransome on 348 7882.

Chiropody & Reflexology

by Julie Russell

at Pure Balance

for a appointment ring

0181-883 4316

for home visits ring

0181-444 1184

1A Leicester Mews Leicester Rd East Finchley N2 9DJ