



Shoes, Trainers, Sandals, Bags and Luggage

Complete Repair Service by a craftsman
Same day if required

Key Cutting

1 Manor Park Rd. N2, behind 88 Church Lane, opposite Trinity Church
Tel: 07956 329 150 Open 12-7pm



Tony Berkman - Art Foundation Student at Hampstead Garden Suburb Institute. Picture by Richard Wakefield

'Excellent ethos' at Manorside

Ofsted inspectors have praised the quality of teaching at Manorside Primary School in Church End, Finchley, calling it "imaginative and challenging". Their inspection took place at the end of March and the report is available to read at www.manorsideprimaryschool.co.uk.

Inspectors said there was "a relentless drive to succeed" at the school, and it has a "considerable record of accelerating progress". This can be seen in the development of the children's skills and abilities. From the time children start at the school progression is monitored so the leadership team is able to identify next steps for improvement.

Another observation by the Ofsted inspectors was that "an excellent ethos underpins all aspects of school life". Parents are overwhelmingly supportive, and appreciate the opportunities created by the school, where every child can succeed.

The range of additional activities that support learning and personal development were also described as outstanding. These activities included a project run in conjunction with the Royal Opera House where pupils composed and performed their own operetta.

Another example cited was when Year 6 pupils recently worked with a scientist in exploring the 'fitness for purpose' of everyday objects such as sliding doors.

A happy place

In a letter to the children of Manorside, the Ofsted inspector explained the findings of the report: "We saw how the teachers inspire you to learn and we agree with you that lessons are fun. So much so that we were often reluctant to leave the classroom - we were learning quite a bit too!"

Commenting on the way that children from such diverse backgrounds play so well together, the inspector quoted a parent who said, "There is a genuine community feel to



Manorside children are all smiles at their school's Ofsted report. Photograph courtesy of Manorside Primary School

Manorside. The older children are really nice to the younger kids. It is a happy place".



Not only a Chiropractor's Clinic!

Did you know we also offer:

Therapeutic Massage, Yoga Classes and One to One Sessions, Pilates Classes, Reflexology, Reiki, Meditation

Look out for our Special Offers at The East Finchley Festival (June 22nd)

Dr Mark Warren BSc. MChiro. ICSSD Chiropractor
98 High Road, East Finchley N2 9EB
Tel: 020 8444 0666

www.activechiropractic.org.uk

info@activechiropractic.org.uk

Summer art is here again

By Ann Froomberg

Our very own talented East Finchley artists and craftspeople are working hard and gearing themselves up for their Open Houses 2008 event, which will take place over two weekends, 5-6 July and 12-13 July, from 11am - 5pm.

The East Finchley Open (known as the EFO) has been running for five years. It is a dynamic voluntary group of over 40 artists and craftspeople, living or working in or near N2, and is the most successful of its kind in north London.

EFO members open their homes and studios to the public once every year to share their art in a very personal way. Visitors will be able to talk to artists in a relaxed environment, purchase work (at artists' prices, without gallery commissions) or simply feast their eyes on beautiful creations in domestic settings.

The artwork is rich and varied, each artist exhibiting his or her individual work. Paintings, photography, sculpture, ceramics, textiles and jewellery will be among the exhibits, all of a very high standard.

How to find us

The 2008 EFO catalogue should arrive through your letterboxes in good time, with details and a map of venues. Artwork will also be on display at Chorak, the coffee shop and bakery in both East Finchley and Muswell Hill; at Jennie Mann, the florist and gift shop in Church Lane; and at Kokos, the High Road shoe shop.

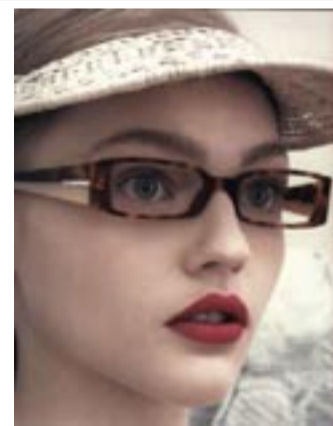
For the first time the EFO will hold a Big Tent art exhibition at this year's festival in Cherry Tree Wood on Sunday 22 June, where you can catch a preview of the Open Houses' artwork. Catalogues will also be available there. For further information check out the EFO website on www.eastfinchleyopen.org.uk where you can find artists' individual web pages.

STEWART DUNCAN

OPTICIANS, SINCE 1962

- EYE EXAMINATIONS
- DESIGNER EYEWEAR
- CONTACT LENSES
- LATE NIGHT
- DYSLLEXIA CLINIC
- DVLA APPROVED
- OLD FASHIONED SERVICE

020 8883-2020
126 HIGH ROAD, EAST FINCHLEY



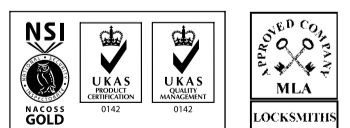
SECUREBASE

DOMESTIC COMMERCIAL INDUSTRIAL SECURITY

Est 1988

- CCTV
- Access Control
- Intercom Systems
- Intruder Alarms
- Locks Doors
- Safes Grilles
- + EMERGENCY LOCKSMITHS

WHY NOT HAVE
Your Security Problems Solved!
A FREE ALARM SURVEY



0800 279 0792

112 High Rd • East Finchley • London N2

www.securebase.co.uk