



## Project to safeguard vulnerable people

By Sergeant Andy Matthews

The role of the Safer Neighbourhood Team is to respond to the policing needs of all East Finchley's diverse residents and businesses. As many of our residents are of retirement age, the team works in partnership with Barnet Council, Age Concern, all the sheltered housing communities, and Contact, a local charity which provides assistance and crime prevention advice to our elderly and disabled residents.

There has been a recent rise in distraction burglaries, rogue traders and bogus callers in the borough. These criminals target the elderly and disabled, particularly if they live alone. If someone becomes a victim of crime it can have a huge impact on their confidence, fear of crime and quality of life.

In an effort to identify and prevent such victimisation, the team has set up the Vulnerable Persons Project. Team members can be invited to visit a vulnerable person's home and give them advice on preventing these types of offences. We also offer contact to other agencies that can provide help and support for other issues that affect vulnerable people.

If you feel you are at risk of such crimes or you have an

elderly or disabled neighbour or relative living in East Finchley who may be at risk, please do not hesitate to contact us using the details given below.

### Drop in surgery

Anyone is welcome to meet the team and get crime prevention advice at the Drop-in Surgery upstairs at the Green Man Community Centre, Strawberry Vale, N2, on 24 July between 3pm and 5pm.

### How to contact us

The Safer Neighbourhood office is at 113 East Finchley High Road, N2 8AG. You can phone us on 020 7161 9014 or 07887 632767, email us at [EastFinchley.snt@met.police.uk](mailto:EastFinchley.snt@met.police.uk) or talk to the Police Community Support Officers (PCSOs) you see on patrol.

## Happy birthday, parking questionnaire

Well, it's a whole year since residents living in Controlled Parking Zones completed a Barnet Council questionnaire asking for their comments on the parking restrictions. As yet, no results have been made public.

Those who live close to the tube station and the Institute, where demand for parking spaces is high, are particularly concerned as to the outcome, not to mention many others who feel that the results are now well overdue.

THE ARCHER has been asking Barnet Council every month for many months when residents can expect to see the outcome of the consultation exercise.

The latest reply we received stated that the council is in the final phase of the process and a letter

regarding the outcome of the review is to be delivered to residents and traders in early July.

A Barnet Council spokesman said: "The Council received a good response from the consultation. However the feedback results were varied and several raised issues were further investigated for clarification; hence, it has taken longer than originally anticipated to thoroughly complete the review to ensure our conclusions fully reflected the views of those who responded."

## Residents fight for 20mph zone

By Caroline Broome

East Finchley Village Residents' Association (EFVRA) held its fifth meeting on 1 June at the Five Bells Pub, East End Road. Amongst a very packed agenda, the two main items of concern to local residents were traffic control and street lighting.



### Sign of the times

By Diana Cormack

Just before the park was inspected for Green Flag status, large new name signs were put up at each entrance to Cherry Tree Wood. Unfortunately someone got it wrong but, as the pictures show, Barnet Council put it right in the end.



Now you see it... now you don't.

Photos by Diana Cormack

Barnet Council has refused EFVRA's initial request for a 20mph speed limit in Church Lane, instead agreeing plans for only relatively minor alterations, mainly at the junction with East End Road.

The meeting was against those plans, as the problem also affects the other end of Church Lane towards the High Road. The current plans do not address the Safe Route to Schools, and members were unanimous in continuing to demand the introduction of a 20mph speed limit. Ongoing dialogue continues between local residents, speaking through EFVRA, and Barnet Council Traffic Control.

EFVRA Chairman Bob Owens' response letter to Barnet Council stressed that current plans do not address the concerns and fears of local people, and that EFVRA will continue to request a more effective survey of traffic activity. Details of survey schedules should be made public so EFVRA residents can attend, and the whole

matter should be discussed before any further plans are implemented.

### Street lighting

A new item on the agenda was the current installation of new street lighting in N2, specifically in Church Lane and the county roads. Major concerns were expressed regarding its close proximity to private houses, resulting in sleep deprivation and obstruction to people's entrances from the pavement. As the implementation of this replacement scheme spreads throughout N2, EFVRA will continue to monitor local opinion and act accordingly.

As EFVRA reaches its first year anniversary, it is asking its 100 or so members for their thoughts on how it should develop. To take part in this informal survey, or for further information, please contact [EFVRA@btinternet.com](mailto:EFVRA@btinternet.com)

Future EFVRA meetings will be held at 8pm on 20 July and 12 September at The East Finchley Constitutional Club, The Walks, N2.

## Your chance to contribute to Buswatch

By Daphne Chamberlain

East Finchley Buswatch is holding its next meeting on Tuesday 14 July from 7-8pm at the Constitutional Club. The venue, on The Walks between Kitchener Road and Park Road, is central and accessible enough to encourage a good turn out, and Buswatch is keen to hear the public response to the latest developments and non-developments on the local bus front.

Up for discussion will be the extension of the 263 route from Archway to Holloway. Does the undoubted convenience of a bus route going further than Archway compensate for the frequent bunching noticed by some members?

Members have also noticed increased overcrowding on the 263, and want to discuss TfL's repeated assertion that this does not exist, and that no other bus service is necessary for this route.

Bound up with this are persistent public demands for a direct bus route to the Royal Free Hospital. Several people have pointed out the inconvenience and possible danger of crossing the multiple road junctions at Archway to reach the Whittington Hospital.

East Finchley Buswatch has raised the profile of the 263 route, but doesn't want to overlook the 143. Any information or opinions on this route would be welcome.

If you would like to discuss any of these issues, but cannot attend the meeting, please

contact Hazel Burnett on 020 8444 6824 or [hazel.burnett@freeuk.com](mailto:hazel.burnett@freeuk.com).

## Under new management

A new shop has opened where the Post Office used to be at 121 East End Road.

On Friday 12 June, Crystal Food opened its doors to sell fresh and frozen Asian and Halal food. In addition, it sells a wide range of greeting cards, stationery, newspapers and magazines, along with bus passes, Oyster cards and telephone cards. Photocopying will also be available.

**HA HA HAIR ARENA**  
is two years old.

We would like to say  
a big 'Thank You' to all our customers  
for their continued support.

On presentation of this voucher you will receive a luxury  
treatment including hair massage. Please call to book.

TEL: 020 8444 3936  
148 HIGH ROAD EAST FINCHLEY LONDON N2 9ED

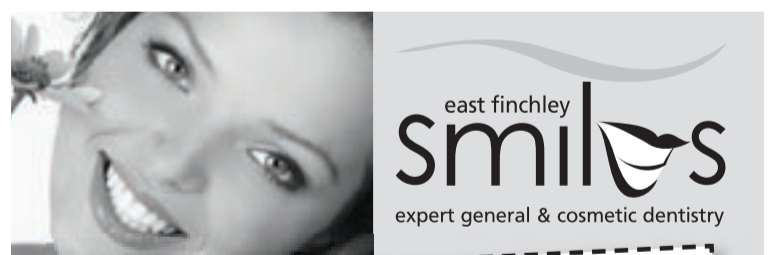
**East Finchley Baptist Church**

Just off the High Road in Creighton Avenue N2

Sunday Mornings at 10.30 am

For more information  
please contact the Church Office  
Tel: 8883 1544 (Minister: Simon Dyke)

Visitors always welcome



**NHS CHECK-UPS £16.50**  
(this includes x-rays where necessary)

**NHS EXEMPT PATIENTS AND  
CHILDREN UNDER 18 ARE FREE**

new **NHS** list now open

member of the  
BDA and the BDHF



smile with confidence

**020 8444 3436**

144 The High Road, East Finchley, London N2 9ED  
[www.eastfinchleysmiles.co.uk](http://www.eastfinchleysmiles.co.uk)