



Brownies pack desperately needs a new leader

By Ella Dorrell

The 4th East Finchley Brownies pack will sadly need to close after this term if they cannot secure a new volunteer. The current girls would have to find a place at another group some distance away and girls on the long waiting list may not be able to join the girl guiding family.

The current leader, Lisa Attfield, has been involved with the pack for nearly 10 years, starting as additional help to the group before taking the leader role fully. However due to other commitments she is no longer able to lead the group.

The Brownies pack is part of a division. There is support from the district commissioner, and opportunities to join in activities organised at district and national level.

really enjoyed my time leading the group, and have had many lovely experiences. Some of the highlights have been Brownie sleepovers, adventure holidays, boating at Welsh Harp, pond dipping at Golders Hill, visits from guide dogs, theatre trips, learning archery and climbing and Easter egg hunts at Cherry Tree.

"I have been lucky that the girls have come from a variety of schools. One of the best things has been the opportunity to watch as the girls make new friends, develop an understanding of working together as a team, and develop in confidence."

The Brownie group currently meets in term time on Thursday evenings from 5:30pm to 7pm at St Mary's church hall. The session can be adjusted to suit the new leader. No one will be expected to take on the group without support from Lisa, the district commissioner, and other volunteers.

If you want to discuss further, email Alison Johns, district commissioner at alison-mjohns@gmail.com. For more information visit www.girlguiding.co.uk



The 4th East Finchley pack have organised activities so that the girls can earn Brownie badges. They also raise money for various charities, learn about the world around them, and think about others.

Lisa Attfield said: "I have



Danny Lothian with some of his huge Lego collection. Photo Mike Coles

Trains and boats and planes: all in my bedroom

Cars, trucks, helicopters and diggers, eight-year-old Danny Lothian has them all. The Martin Primary pupil has constructed a massive collection of more than 150 Lego models that's completely taking over his bedroom at home in East End Road.

"I buy lots of them myself," says Danny. "I save my pocket money and I do jobs like cutting the grass to earn more money."

"Lego is all over my shelves

and I may have to get some new shelves to put all the models on, or hang them from the ceiling. I build all the models on my own. I love it and I can do kits meant

for 12-year-olds."

Danny, who's also learning Thai boxing and ju-jitsu at East Finchley Combat Academy in Church Lane, says his favourite Lego model is his Simpsons house, a really big model home that opens up at the front.

His mum Carol adds: "Lego is all Danny ever asks for at Christmas and birthdays."

Tesco's coming – but not to East Finchley

By Janet Maitland

When we heard a rumour that Tesco is planning to open a store on the site of the Esso garage at 217 High Road, we decided to investigate. A spokesperson from Barnet Council informed us that they had not received a planning application from Tesco for this site and that they were "not aware of any intention to apply."

We asked Tesco if they were planning to build a store at the garage site or anywhere else in East Finchley. A spokesperson told us: "We are planning on building an Express store in East Finchley and are looking forward to becoming part of the local community. We're confident our store will be popular with customers as it would offer a wide range of products in a convenient location and create around 20 jobs for local people."

We asked Tesco to check the exact location of this store. We also went back to the council to inform them that, according to Tesco, a store would be opening in East Finchley. "Our planning

teams are not aware of any intention to submit a planning application for a Tesco Express in East Finchley," insisted a council spokesperson.

Mixed messages

Tesco then notified us that the address of the East Finchley store would be 770 High Road, North Finchley, N12. We pointed out that East and North Finchley are different places. Some time later they got back to say: "We're going ahead with the store in North Finchley, not East Finchley, and apologise for the confusion."

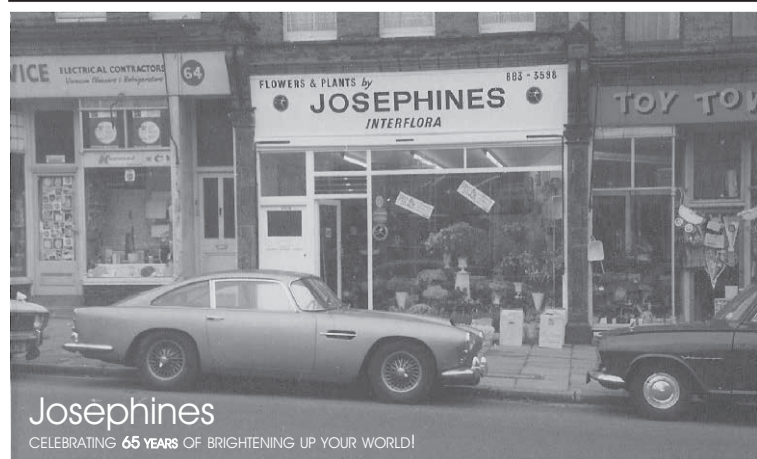
Mr Mohan, the manager of the Esso garage, declined to make any comment to the press.

Car boot sale

Vale Farm Horticultural Society is inviting everyone to its next car boot and table top sale to help raise funds for its allotments off Tarling Road, N2, on Sunday 14 June from 11am to 4pm.

Go along to the allotments to browse, get to know plot holders, ask for gardening advice, share a tea/coffee and cake and of course grab a bargain from sellers.

If you are interested in having a table yourself contact Lyndsay at Lyndsay@valefarm.org or Janine at Janine@valefarm.org



Josephines
CELEBRATING 65 YEARS OF BRIGHTENING UP YOUR WORLD!

Nicky Sharp
Osteopathy Clinic
Cranial and Structural Osteopathy and Acupuncture
All Major Insurers Accepted
 For consultations and appointments:
Telephone: 020 8815 9433
 260 East End Road www.nickysharposteoopathy.co.uk
 London N2 8AU e-mail: info@nickysharposteoopathy.co.uk

Japanese
Acupuncture & Moxibustion
 Gentle, dynamic & effective.
 Promoting health and vitality.
 Treatment is tailored specifically to your needs.
Fiona Hurlock
 Ph 07795 203107
 Please see www.fionahurlock.com
 Utopia 1a Leicester Mews, N2 9EJ

KATHRYN SCORZA

Dissolving the blocks to self healing
 Kathryn Scorza
 Registered Hypnotherapist
 Soul Therapist and Spiritual Healer
 tel: 07703 404 839
 email: kathryn@kathrynskorza.co.uk
www.kathrynskorza.co.uk
**HYPNOTHERAPY
 SOUL THERAPY
 SPIRITUAL HEALING**
 Hypnotherapy can help with managing many issues, including stress, anxiety, pain, fears, phobias and compulsions.