



## SAFER NEIGHBOURHOODS

LOCAL POLICE, LOCAL KNOWLEDGE

Jan Lovell, of the East Finchley Safer Neighbourhood Team, explains what police teams are doing to tackle the rise in the number of phone and property snatches by offenders on motorbikes. Jan and the team can be contacted by email at: [EastFinchley.snt@met.police.uk](mailto:EastFinchley.snt@met.police.uk), or by phone on 020 7161 9014. Follow the team on Twitter @MPSEastFinchley.

We are working hard to keep the public safe and make the streets a hostile territory for criminals who use scooters, mopeds, motorbikes and bicycles to snatch valuables from members of the public.

These offences are being tackled in a coordinated effort under Operation Venice. This involves raids on individuals suspected of stealing scooters, motorcycles and mopeds, DNA capture and mass checks on stationary and moving motorcycles, including using automatic number plate readers.

### Prevention and deterrence

We are also reducing the opportunities to take the vehicles in the first place through a combination of approaches. Among these are: making owners aware of what they can do about reducing the thefts; working with industry and councils to protect or design the theft options out of the vehicles and concentrated deployments

around high-crime areas.

A further step is to remove the markets for these offenders to dispose of their goods by engaging with secondhand phone shops, markets, scooter dealers and garages to improve intelligence and remove locations that will buy the stolen property.

Ultimately we want to bring offenders to justice by using intelligence and CCTV evidence, as well as launching targeted operations with sting vehicles.

You can reduce the risk of your two-wheeler being stolen by locking it securely to a fitted anchor and by installing audible alarms. Meanwhile phone users should stay alert at all times and avoid texting while walking. Find your IMEI number by dialling \*#06# from your phone and keep a written note of it. If the phone is stolen, report it to the police and your mobile provider to stop it being used.



'Home from home': East Finchley tube station. Photo Mike Coles

## A welcome return to the station

## Personal stories of how people came to be in East Finchley

By Diana Cormack

Three years after its first brief appearance at the station, the handmade 'Welcome to East Finchley' sign has returned, adding to the new found ambience of the entrance hall. It is the brainchild of local resident Gill Steiner who made the mosaic by carefully sewing on 1,700 buttons (*The Archer*, September 2014). Station users can once again have their photos taken with the much-admired greeting.

As in 2014, it is suitably set in a display of plants and flowers currently brightening up the concourse. These are provided by station worker Nino Rocha Santos as part of the annual Underground in Bloom competition.

Three years ago Gill told us: "The sign is dedicated to all the lovely people of East Finchley who make it such a special place: very many people who show kindness, enterprise and initiative. I think it may be unique for an underground station to have a welcome sign."

By Diana Cormack

Travellers through East Finchley tube station have been stopped in their tracks by an impressive display in the ticket hall featuring Martin Primary School's project 'Destination East Finchley'. This lottery-funded project is a celebration of our multi-cultural community and how people came to live and work here.

Year 6 have written up interviews with traders running businesses on the High Road and with parents of Martin School pupils: "People here are lovely and polite," said Ali, of the Seasons restaurant. "Coming here was a big step, especially for the children. Sometimes they feel sensitive and miss their country, but deep inside they're happy here," said Linda, from the Lebanon.

Looking on with their two-year-old daughter Georgia, who was born in East Finchley, were

African-American Montana and her partner Jan from Switzerland, who both had worries about Brexit. They told *The Archer*: "This is really amazing and such a brilliant idea, showing the diversity of our community. It makes people stop and talk to each other and the map makes you feel less lonely."

Wesam from Syria's written comment summed it up: "I'm very happy here. I wouldn't want to move. There is good harmony here, a lovely place to live."



Overflow: This storm drain couldn't cope with the British summer. Photo Roger Beeson

## Temporary water feature floods High Road

Soaked shoppers in East Finchley suddenly found the High Road had its own fountain when this storm drain opposite Baronsmere Road overflowed dramatically during the torrential downpours of Wednesday 9 August.

Water cascaded down the hill towards the tube station, forcing oncoming traffic to take evasive action. Affinity Water sent along a technician to inspect the drain and found the sheer volume of water had caused the burst. Thanks to Roger Beeson, who tweeted the photo.

### Greene Driving School

East Finchley N2

From £20.00 per hour for 2 hr lesson

Safe driving for life

Small manual Low Co2 Car  
Eco & Low Maintenance Tuition  
Pass Plus 4 cheaper Insurance.

Call John M.L.M.I

0773 851 4406 [greenedriving.co.uk](http://greenedriving.co.uk)

A friendly welcome awaits you

### EAST FINCHLEY METHODIST CHURCH

197 High Road, London N2 8AJ (opp. Creighton Ave.)

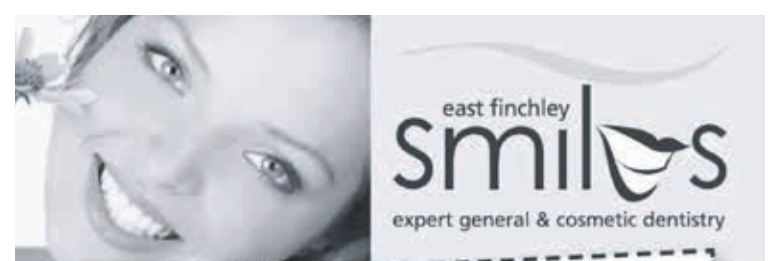
tel: 0208 346 1700 [www.eastfinchleymethodist.org.uk](http://www.eastfinchleymethodist.org.uk)

Sunday service at 10.30 a.m.  
with Crèche

Worship Music Social events Wheelchair friendly

e-mail: [info@eastfinchleymethodist.org.uk](mailto:info@eastfinchleymethodist.org.uk)

Room hire tel: 020 8444 9887



**NHS CHECK-UPS £20.60**  
(this includes x-rays where necessary)

**NHS EXEMPT PATIENTS AND CHILDREN UNDER 18 ARE FREE**

**new NHS list now open**

member of the BDA and the BDHF



smile with confidence

**020 8444 3436**

144 The High Road, East Finchley, London N2 9ED

[www.eastfinchleymiles.co.uk](http://www.eastfinchleymiles.co.uk)