



5: The White Lion (or lions, since there are a matching pair). These are at the entrance to the Old White Lion pub next to the tube station. There has been a pub on that site for hundreds of years and its pair of big cats stand ready to welcome drinkers every day of the year.

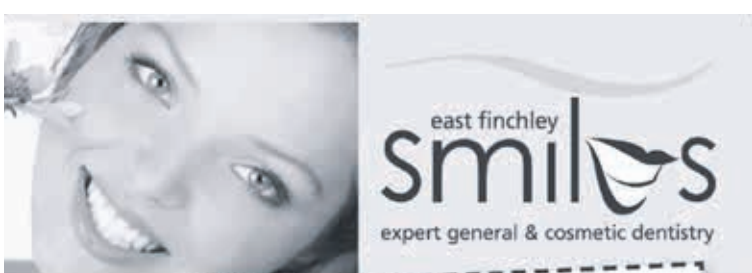


4: The steel globe at McDonalds. This is in front of the main entrance to the McDonalds headquarters (next to the tube station) and incorporates a fountain continually running over the globe, no doubt somehow representing perfection in the hamburger experience.



1: At No 1, it had to be Archie, the iconic symbol of the neighbourhood above the tube station, shooting his arrow down the Northern Line southbound tunnel to distant Morden. The 10 foot tall statue is by English sculptor Eric Aumonier and was unveiled on 22 July 1940, a few years after the current station was opened.

2: The mechanical horse at the Hexagon car showrooms. Just 100 yards south of the tube station this sensational life-sized horse is made entirely of old car parts and is well worth a look



NHS CHECK-UPS £21.60
(this includes x-rays where necessary)
NHS EXEMPT PATIENTS AND CHILDREN UNDER 18 ARE FREE

new NHS list now open

member of the BDA and the BDHF

smile with confidence
020 8444 3436
144 The High Road, East Finchley, London N2 9ED
www.eastfinchleysmiles.co.uk

3: The Stag at the Bald Faced Stag pub at the junction of the High Road and East End Road. This proud beast has been there as long as anyone can remember. The pub has changed hands many times over the years but the stag has remained standing proud over the rooftops



A Local Handyman
available for general household & garden maintenance.
No Job Too Small
Free Estimates
Call John on: 0789 010 3831
or: 0208 883 5325

COMPUTER SAVIOUR
Certified Visiting Technician
For All Your Computer Needs
Maintenance, Repairs, Networking, Virus Removal And More.
Call Neill Hoskins: 079 600 89528 neill@computersaviour.co.uk

