



Letters



Barking: The Halloween window display at Fetch22 (see letter, below right)

Where's the bus?

Dear Editor,

Can someone please explain to me the need for a bus lane spanning the length of East Finchley for the one, mostly inconsistent bus service? It is because of the shabby 263 service that I learned to drive in the first place!

The congestion and pollution across the whole of East Finchley is not worth closing one lane through the streets for the only bus that uses it. Get it gone, in my opinion!

James Nassour,
Address supplied.



On high: Mistletoe

Mistletoe on high

Dear Editor,

Mistletoe is a plant not seen that often in London but it has at least two healthy representatives in the East Finchley area. The one shown in the photo is on a large poplar in East Finchley cemetery; and there are other clumps on a tree near Avenue House, in Hampstead Garden Suburb, and behind Cranley Gardens in Muswell Hill. See if you can spot them.

Mistletoe has long been recognised as an unusual plant and indeed it is. It is hemi-parasitic, which means it thrives best when it can tap into the vascular tissue of a host plant, such as apple, hawthorn and related species, and thus gain extra nutrients. It produces semi-translucent whitish berries, which contain seeds, and which are eaten by birds.

The plant in the photo was one small clump a year ago, but is obviously thriving, and probably spreading. There may well be lots of other clumps in the area, only really apparent when the host trees have shed their leaves to survive the winter. I would be most interested to hear of other examples.

Linda Dolata,
Address supplied.

Dog bones

Dear Editor,

I walked down the High Road daily during Halloween and thought the shop window at Fetch22 dog groomers was special and funny. It made many people smile and was quite a talking point.

Natalie Szalai,
Address supplied.

Dennis's tribute

Dear Editor,

Now that COP26 is over, I remembered that approximately 50 years ago, my design engineer colleague Brian was arguing for us to design for renewable energy. This is a poem I wrote in his honour.

An Engineer,
he designed machines.
He knew about wind-power,
its properties, potential....
He would sketch at his drawing board
Schemes of great elegance.
Colleagues thought him a crank.
Brian ignored the mocking,
remained his good-humoured self.
Vindicated, I think of you now.
Brian, take your bow!

Published in *Occasional Poems*
(Celebration Press, London).

Dennis Evans,
N2 Poets.

N2United: bees, art... and taxes

By Chris Stavrou

The N2United November get together was as eclectic a mix as ever, with local businesses, interest groups and residents gathering at the East Finchley Constitutional Club for the second time since meetings were in person again.

A number of guest speakers spoke passionately about varied topics, including Kate Brown from the East Finchley Pollinator Programme. The meeting attendees learned of the importance in creating "pollinator highways" and how the local community can get involved, including which flowers best suit pollinating insects and where we can all plant them. This project will require community participation on all levels. There will be much more coming up if you're interested in the pollination project, including a Zoom meeting in late January 2022.

Taxing matters

Drazen Coric, of TaxAssist Accountants, spoke on the recent Budget announcement and the impact on businesses, the self-employed, employers and employees that the changes will have when they are enforced in April 2022.

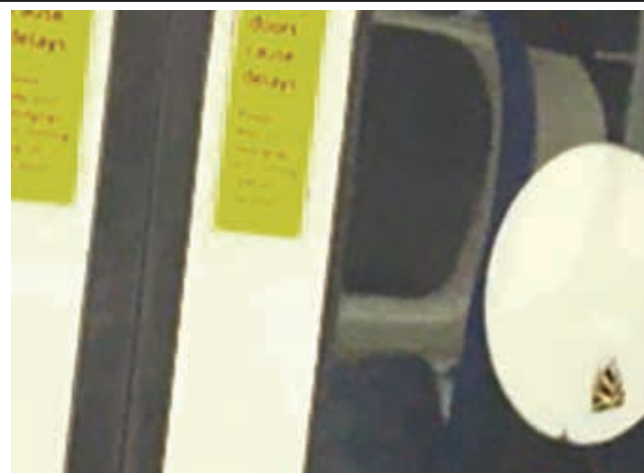
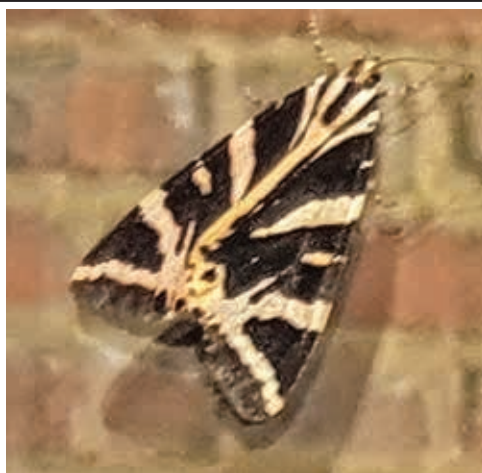
From the longstanding East Finchley Open Artists group, Peter Hale discussed how lockdown had prevented their yearly main event where the group showcase their art in open houses. The change in circumstances gave them the opportunity to revamp their website,

reaching not just the regular visitors but art appreciators from further afield.

Open meetings

All N2 residents, traders, businesses and community organisations are welcome at meetings. Their next meeting will be a social gathering on 9 December, and the theme in the new year will be turning a new green leaf, with speakers from Bin There Donate That, No2PlasticsN2 and local trader Peter Barnett of A Scott's fish.

Find out more about N2United's regular meetings at www.N2united.co.uk.



City slickers: Jersey tiger moths photographed on a patio door and a Northern line train

Moths make themselves at home

By David Melsome

In October we printed a photo of a striking Jersey Tiger Moth taken by Tony Roberts during a walk in Coppetts Wood in Friern Barnet and noted that the moths, once rare in Britain, now seem to be spreading north from their established habitats on the south coast. The evidence is certainly mounting after two more readers sent us photos of their sightings.

Prem Stasopoulos photographed one basking on a window in Diploma Court, off the High Road, with a trick of perspective making it look huge against the brickwork outside. And if any further proof was needed that the moths are adapting quite nicely to London life, Rachel Winton snapped one hitching a ride on the door of a Northern line train heading south. Saves a lot of flapping!

Fun and support for seniors

Age UK has a full line-up of activities and support groups planned for the winter months in East Finchley. Here's a quick round-up with the appropriate contact details to find more information:

Book club

Age UK Barnet's next book club session is on Tuesday 7 December at the Ann Owens Centre, Oak Lane, N2, from 3.30pm to 4.30pm. To sign up contact Helen on 07384 466840, helen.nicolaou@ageukbarnet.org.uk

Scams awareness

Met Police officer Tom Lee will give a talk about protecting yourself against common scams on Monday 13 December at 11am. Contact Lindsey on 07535 648281, lindsey.bennister@ageukbarnet.org.uk

Sporting memories

Join the Age UK Barnet team every week on a Monday evening from 6pm to 7pm for a convivial and fun group discussion about your personal sporting memories, hosted by former sports journalist Ed Newman.

Talk the News

If you're interested in news,

current affairs and politics, this is the group for you. Hosted by the former political editor of the Evening Standard, it will run from 11am to 12noon starting on 11 January. Contact Lindsey on 07535 648281, lindsey.bennister@ageukbarnet.org.uk

Befriending

Age UK's Dementia Befriending Service provides companionship to older people who are living with dementia. Contact Becky on 020 8150 0967/07990 705170, rebecca.bayne@ageukbarnet.org.uk

Volunteers needed

Age UK is looking for volunteers for shopping assistance, befriending, running activities, dropping off leaflets and helping older people with their smartphones and laptops. Please contact Lisa on lisa.robbs@ageukbarnet.org.uk or 020 8432 1422.

ALL SAINTS' CHURCH

Church of England
35a Durham Road, East Finchley, London N2 9DP

Christmas Services

Sunday 19th December

Get in the mood for Christmas!!
6.00 pm Christmas Carol Service

Friday 24th December

Christmas Eve
4.00 pm Crib Service & Christingle
9.00 pm Sung Mass of Christmas Night

Saturday 25th December

Christmas Day
8.00 a.m. Mass of the Dawn
10.00 am Sung Mass of the Day

For more details, contact:

Fr Ian Chandler
020 8883 9315

or check our website:
www.all-saints-eastfinchley.org.uk