



**Your news**

Send your stories, letters, and photos to news@the-archer.co.uk or by post to The Archer, PO Box 3699, London N2 2DE. Find us on Twitter, Facebook and Instagram @TheArcherN2. You can view our online archive at www.the-archer.co.uk

# The Archer

Published by East Finchley Newspapers, P.O. Box 3699, London N2 2DE. www.the-archer.co.uk

## Caroline comes up roses

Hampstead Garden Suburb Horticultural Society has elected Caroline Broome, of Church Lane, N2, as its Chairman. Caroline, who was previously Vice-Chair, has left her London County Volunteer role as an Assistant County Organiser for the National Garden Scheme to concentrate on her new post.

The Society would normally have published a full programme and an annual members' handbook in January, but this year decided to wait until actual meetings and visits become possible.



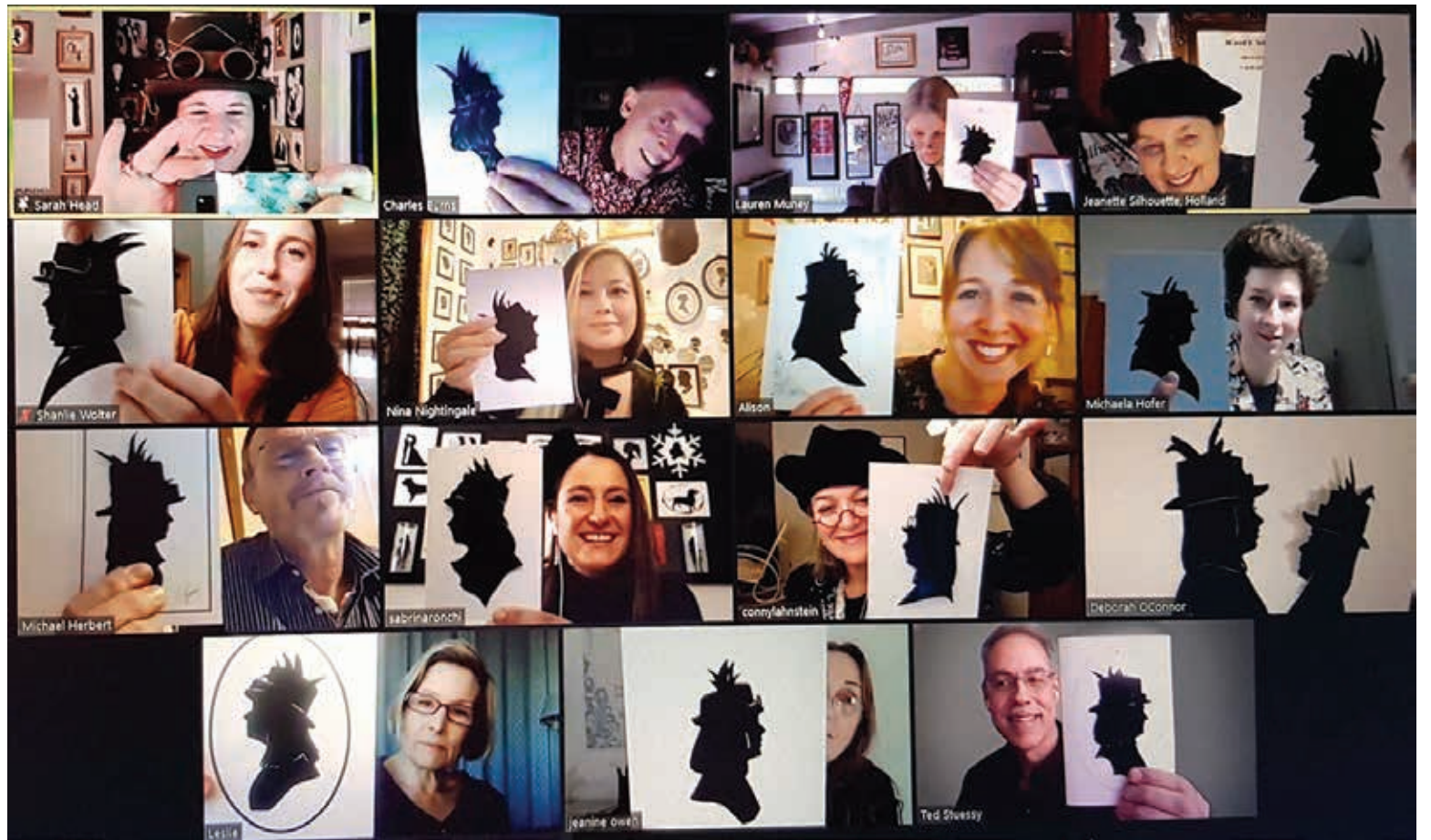
At the moment it looks as if the Society's June Flower Show at least will be a virtual one, but there is still hope, especially for home-made cake lovers, that perhaps we will all be able to meet at the Autumn Show in the Free Church Hall in Northway, NW11, in September.

Membership is open to anyone interested in gardening, regardless of whether you live in the Suburb or not. If you would like to join, email hgshs.membership@virginmedia.com.



## Yesterday's news today

You can explore all the news from East Finchley over the last 27 years in our online archives, where nearly every edition of *The Archer* since 1993 is available to browse for free. Find them at www.the-archer.co.uk



## World's first cut-out-and-keep call

By John Lawrence

**A Muswell Hill artist found a new way to liven up an online group call by hosting the world's first international convention of silhouettists.**

Alison Russell is skilled at the popular Victorian and Edwardian art of cutting profiles of a loved one or well-known person using paper and scissors, a cheaper alternative to photography at the time.

Before the pandemic, she was in demand at weddings, trade fairs and corporate parties, and also worked with the Royal

family and with celebrities such as Victoria Beckham, Dame Shirley Bassey and fashion designer Paul Smith.

Stuck at home for the last year, she realised that being in isolation was no barrier to practising her craft, so she tracked down fellow professional silhouettists from around the world on Instagram and Facebook, and invited them to join her for the special gathering.

**Live portraits**

By way of introduction, each artist sat in profile for five minutes sharing how their

love affair with silhouette cutting was first ignited, while the rest of the group cut their silhouette live. The resulting 15 versions of each participant were then posted for the recipients to keep as a memento. Alison said: "Rather than becoming deflated by the isolation caused by our current circumstances, I decided to utilise the tools at hand to reach out further than our own borders

and boost everyone's morale." The convention was a huge success and everyone who attended was keen to turn it into a regular event. Once Covid restrictions lift, Alison expects the trend for online experiences to continue. "We have found a new platform for our art," she said. Find out more about Alison's work at www.alison-russell.co.uk and follow her on Instagram @alisonlouiserussell

**COLIN SCLARE**  
Sales & Lettings

The Brentano Suite, Lyttelton House, 2 Lyttelton Road, London N2 0EF

We cover East Finchley, Muswell Hill, Hampstead Garden Suburb, North Finchley, Whetstone, Finchley Central, Barnet, Friern Barnet, Golders Green, Archway, Islington and parts of the City.

Letting fee: 7% (= 8.4% incl vat) Sales fee: 1.5% (= 1.8% incl vat)  
But more importantly, a quality service to you!  
Open 6 days a week  
9.30 am - 7 pm Monday to Friday 10 am - 3 pm Saturdays

Contact us on 07891368049 020 8444 3351  
www.colinsclare.co.uk info@colinsclare.co.uk

**DID YOU KNOW?**

YOU ARE GOING TO BE HAPPY WITH YOUR NEW VARIFOCALS OR YOUR MONEY BACK. AS SIMPLE AS THAT

IF YOU TRIED THE REST NOW TRY CERTIFIED VARILUX SPECIALISTS

**STEWART-DUNCAN OPTICIANS**  
126 High Road, East Finchley, N2 9ED  
020 8883-2020

**SECUREBASE**  
DOMESTIC COMMERCIAL INDUSTRIAL SECURITY  
Est 1988

*Your Security Problems Solved!*

- ▶ Intruder Alarms
- ▶ CCTV
- ▶ Access Control
- ▶ Intercom Systems
- ▶ Locks, Doors & Keys
- ▶ Safes & Grilles
- ▶ Locksmiths

**020 8442 0660**  
Securebase Ltd  
112 High Road, East Finchley, London N2 9EB  
T: 020 8442 0660  
F: 020 8365 2788  
info@securebase.co.uk  
www.securebase.co.uk