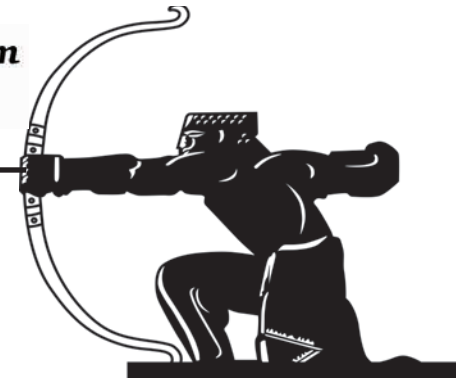


# The Archer



**A community newspaper for East Finchley run entirely by volunteers.**

## Speed signs on crowded roads 'irresponsible'

By Ruth Anders

Residents of the County roads in East Finchley are up in arms after signs were put up advising motorists that they can travel up to 30mph on their narrow streets, even though cars are parked nose to tail and children or animals could cross at any moment.

The signs were installed on 28 July because Department of Transport rules require Barnet Council to advertise the change of speed zone from the 20mph that has been in place along the High Road for many months. But residents say the signs are irresponsible.

The 30mph signs have gone up at the entrance to each of the County roads: Hertford, Bedford, Huntingdon, Leicester and Lincoln. In Bedford Road's case, the speed sign obscures the road name sign.

A 30mph sign is also in place at the end of Kitchener Road while Leslie Road and Leopold Road, along with Church Lane, are already 20mph zones.

### Petition and action

Residents hope to organise a petition asking the council to remove the signs and to make all residential roads in East Finchley 20mph. Haringey Council's side roads are already limited to 20mph and there are hopes that the same will soon be possible in Barnet.

East Finchley ward Councillor Arjun Mitra told *The Archer*: "The previous administration's policy only located 20mph zones outside schools. This is being repealed in favour of a new policy allowing 20mph zones where residents request them. Pending the agreement and sign off from the Cabinet for the policy change, we will consult residents about extending the 20 zones, and the County roads are a long-standing priority."

**Continued on page 2**



Too much information: The new 30mph sign obscures the Bedford Road street name

### "Baffling"

A Bedford Road resident told *The Archer*: "Since the signs went up, we've been talking of little else." Others added: "This seems completely baffling as we would expect any action to slow traffic rather than speed it up on such narrow streets," and "It's totally irresponsible to encourage 'speeding up' on family roads."



Smash and grab: The Pacey's burglar breaks into a cigarette cabinet and sweeps its entire contents into a huge bag in an image taken from the shop's CCTV footage.

## Five businesses targeted in night-time raids

Five businesses on the High Road in East Finchley were targeted by burglars in just one week with raiders cutting through security shutters and in the case of Pacey's newsagents making off with more than £12,000 worth of cigarettes. Turn to page 5 for the full story and more photos.

## Help us with our advertising

Advertising in *The Archer* helps local businesses reach a potential 20,000 readers in East Finchley and online every month. For the last 30 years, they have found it an excellent way of spreading the word to the people of N2 about their goods or services.

Nobody on *The Archer* team gets paid for anything, including our volunteer deliverers, but we do rely on the support and the income we receive from our advertisers to cover the costs of printing the newspaper.

Those costs are rising so, in our anniversary year, we are looking for someone to help us manage our advertising successfully to ensure *The Archer* can continue to serve the N2 community for at least another 30 years.

If you have the skills and some time each month to liaise with local companies, shops and venues to fill our advertising space, we'd love to hear from you. Please email [news@the-archer.co.uk](mailto:news@the-archer.co.uk) and we can tell you more.

If you trade in or around East Finchley and would like to advertise to the almost 10,000 homes and businesses we deliver to each month, we'd love to hear from you too. We have competitive rates and can

offer discounts for advertising in multiple editions. To find out more, please email [advertising@the-archer.co.uk](mailto:advertising@the-archer.co.uk) or check out our Advertising information at [www.the-archer.co.uk](http://www.the-archer.co.uk).

### STEWART DUNCAN

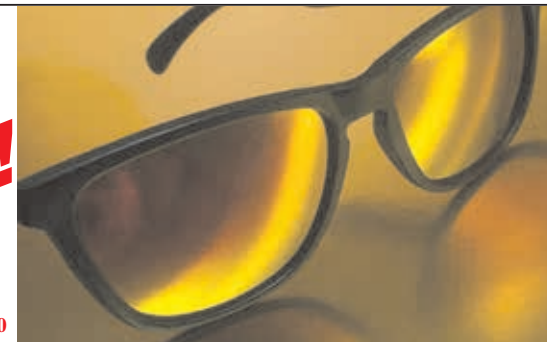
YOUR EAST FINCHLEY OPTICIANS since 1962

BUY PAIR OF GLASSES AND GET PRESCRIPTION SUNGLASSES COMPLETELY

**FREE!**

STANDARD CONDITIONS APPLY FOR DETAILS ASK IN STORE OR

CALL 020 8883 2020



**EVERYTHING ELECTRICAL**  
020 8444 7994  
38 High Road, N2 9PJ

*Scooter Time*



We have a range of electric scooters from fun to city. Pop in Today!

## In this issue

- Bishops Avenue blaze..... p2
- Appeal for Robin..... p3
- Playground milestone..... p4
- Name-changing restaurant... p7
- So long, Poseidon..... p7
- Mosaic in the park..... p8

CELEBRATING  
**250 YEARS**

**PRICKETT & ELLIS** ESTD 1767

East Finchley Office  
82 High Road, N2 9PN  
020 8883 0033

eastfinchley@prickettandellis.com  
www.prickettandellis.com

SALES & LETTINGS AGENTS | SURVEYORS | VALUERS | PROPERTY MANAGEMENT