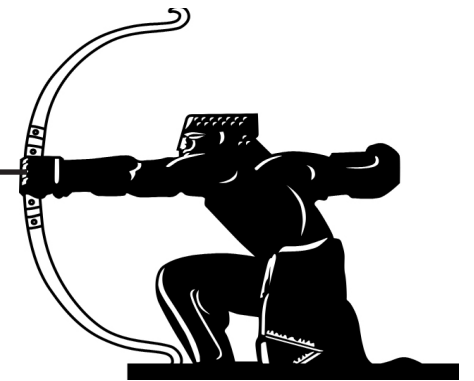


The Archer

Local News is our Aim



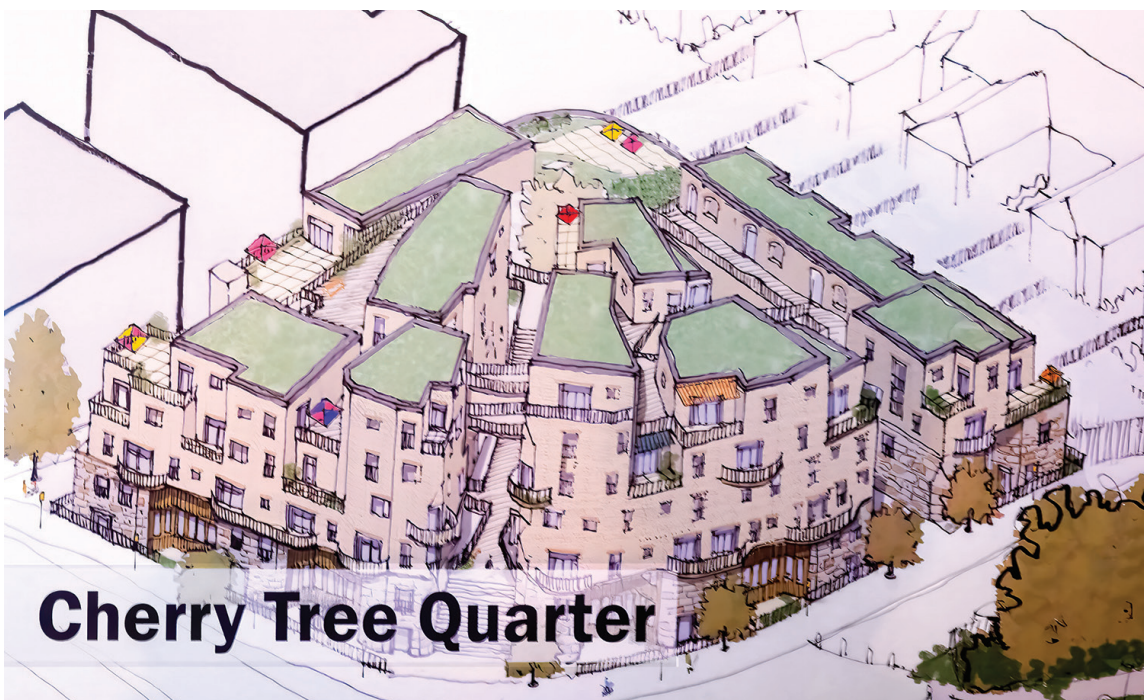
March 2025 No. 371

Delivered free to 10,000 homes and businesses across East Finchley

Housing plan for prime site opposite station



Ripe for development: The Park House and Monkey Puzzle Nursery site seen from East Finchley Station, above, has been identified as a possible site for 70 homes in 12 blocks, below. Top photo Mike Coles.



Cherry Tree Quarter

By Nadia Savvopoulou

A prime site opposite East Finchley tube station and alongside Cherry Tree Wood, which is currently occupied by the Monkey Puzzle nursery, could be developed to provide about 70 new homes under plans being put forward by Barnet Council in partnership with a group of private companies.

The proposals for the new Cherry Tree Quarter project were presented by developers and architect representatives in a public meeting at the Old White Lion pub on Thursday 5 February. They showed the stone and timber-clad homes in 12 blocks of varying heights, some with balconies, in a ‘village’ layout accessed through decked paths, three pedestrian streets and a cobbled central square.

The project team engaged with attendees at the meeting, addressing concerns about parking, social housing, and the future of the nursery. The team said only four Blue Badge parking permits would be issued for the whole site and confirmed there would be no social housing, adding that profits from Barnet Council’s share of any house sales would be earmarked for other social housing projects in Barnet. The nursery would be temporarily rehoused until it could move back into new premises on the site.

First reactions

Roger Chapman, chair of the Friends of Cherry Tree Wood, said his group did not support the development in its current form and called it a “gross overdevelopment of the site”.

“It does not retain the mature trees and open space at the front contrary to the new local plan that was agreed upon by

Barnet Council Cabinet on the same night as the consultation meeting,” he said. “We will campaign for the protection of all the mature trees, the open space at the front of the site, an improved entrance to the Wood, and for a development that respects the plan that Barnet Council has just adopted.”

Building height

Other concerns raised at the meeting included the height and proportion of the housing blocks in relation to surrounding homes and the positioning of the courtyard square at the back of the site, rather than the front.

Continued on page 6

Call-out for poems

As part of the refurbishment of the pedestrian underpass between Manor Park Road and New Trinity Road, N2, reflector panels are being installed for better visibility around the sharp corners.

These will be overlaid with poetry written by local people about the community and the underpass so project organisers are asking for submissions. They are also looking for someone to coordinate the poetry contributions. Email info@grangebiglocal.org or call project manager Karen on 07902 900639 to get involved.

In this issue

- Crumbling buildings..... P3
- Family charity shuts..... P5
- Run-down GP surgery.... P7
- Smartphones in schools... p8
- Arts and reviews P9-10
- Your letters..... P11

Everything Electrical Ltd
 Lighting the way & Making connections since 1995
 Making you warm this winter



www.everything-electrical.com info@everything-electrical.com
 Tel: 020 8444 7994 or Freephone 0800 279 3463

CELEBRATING

250

YEARS

PRICKETT & ELLIS

ESTD 1767

East Finchley Office
 82 High Road, N2 9PN
 020 8883 0033

SALES & LETTINGS AGENTS | SURVEYORS | VALUERS | PROPERTY MANAGEMENT