

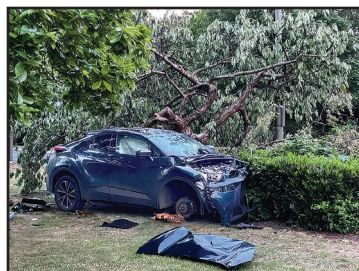


# Car mounts pavement and smashes into tree

By Gail Norcliffe

East End Road, N2, was the scene of a serious car crash on Thursday 14 May. The accident had alarming results, with the car smashing headfirst into a tree, partially knocking it over.

A nearby resident reported that in the afternoon she was driving along East End Road and a car was being driven very aggressively and erratically behind her. The car then attempted to overtake her near the junction with Church Lane. However, the overtaking driver lost control, veering over the pavement and driving at force into one of the trees on the grassy triangle at the end of Trinity Avenue and Church Lane.



Serious damage: The crashed car embedded partly in a tree and shrub

Luckily nobody was injured and it was incredibly fortunate that there were no pedestrians involved. The police quickly arrived and the area where the car crashed was cordoned off. There is concern locally about that section of East End Road which after some sharp bends

over the bridge, is straight and wide thus encouraging more reckless drivers to speed, sometimes with dangerous results. Recently, a car drove into the Trinity Avenue bus shelter and in a separate incident a car crashed into the grass area on the other side of the road outside Nazareth House.

# Pub duo in running for national award



In the running: Arina Piskunova and Eamonn England

By David Melsome

Best of luck to Arina Piskunova and Eamonn England, of the Windsor Castle pub in The Walks, N2, who have been named among the six finalists in the British Institute of Innkeeping's Licensee of the Year Awards.

The couple were selected from a nationwide field of over 800 nominations based on their community impact, support for their teams, commitment to sustainability, their plans for diversification, and the 'X Factor' that makes pubs special.

The couple were selected from a nationwide field of over 800 nominations based on their community impact, support for their teams, commitment to sustainability, their plans for diversification, and the 'X Factor' that makes pubs special.



Team spirit: Friends of Richard Meier after playing a football match in his memory

# Friends team up for football match in memory of Richard

By Matteo Lanzini

A group of neighbours and friends got together on Sunday 10 May to remember Richard Meier, with whom they shared a passion for amateur football until a few months ago, when he sadly passed away after a short but incurable illness.

In recognition of the care Richard received during his last days by staff at St Joseph's Hospice in Hackney, funds were raised in support of the charity and its amazing work. At the time of writing more than £800 were pledged to the cause and everyone is welcome to visit [www.stjh.org.uk](http://www.stjh.org.uk) to find out more about the hospice and ways to

contribute.

The Archer Academy hosted the match and, after a sombre minute's silence, the game was entertaining, with the yellow and blue teams battling it out in good sport. There were moments of collective and individual brilliance, including a few remarkable goals which would have made Richard proud.

Known for his poetry, he could always spot harmony among the ordinary.

At the final whistle everyone, including members of his family, got together to cherish the occasion, taking home the memory and the desire to make the 'Richard Meier Memorial Cup' an annual fixture in future years.

# Pasture opens its gates again

With spring well under way, much-loved local nature reserve Long Lane Pasture is opening up to the community again for the next four months or so.

The volunteers who run the wildlife haven opposite Finchley Fire Station in Long Lane, N3, hope to open every day from 9am to around 7pm, although not in bad weather.

They invite visitors to come and see the changes and progress that their working teams have made over the winter months, including making some of the paths wider and developing a scented winter garden near the gazebo in memory of stalwart volunteer Wayne Armsby.

## THE MUSWELL HILL CLUB FITNESS AND LEISURE

Over 100 classes per month • Swimming Pool  
Cardio floor • Free weights rooms • Sauna & Steam rooms  
Spin studio • Coffee bar • Stretch room • Friendly team

DAY  
PASSES  
£15

Membership  
From  
£44.95  
T&C's Apply

140 FORTIS GREEN, MUSWELL HILL N10 3EF 0208 883 0500  
INFO@MUSWELLHILLCLUB.COM @THEMUSWELLHILLCLUB

Join online NOW [muswellhillclub.com](http://muswellhillclub.com)



**KOKOS**  
SHOE REPAIRS  
SINCE 1976



WE'VE MOVED TO  
UNIT G14 ATLAS BUSINESS CENTRE  
OXGATE LANE, LONDON NW2 7HJ

WE OFFER FREE COLLECTION AND DELIVERY  
FOR N2 AND N10

PLEASE CONTACT US FOR MORE INFORMATION

020 8883 0876  
[www.kokos.co.uk](http://www.kokos.co.uk)  
@kokosfinchley

### Kundalini Activation & Family Constellations

From April 11 - scan QR  
for more info & bookings  
or mail [gill@gilldavis.com](mailto:gill@gilldavis.com)

