

Delivered free to 10,000 homes and businesses across East Finchley
The Archer is a non-profit-making, non-political & non-religious newspaper, run entirely by volunteers

Calls for review of dangerous junction

By Samuel Burke

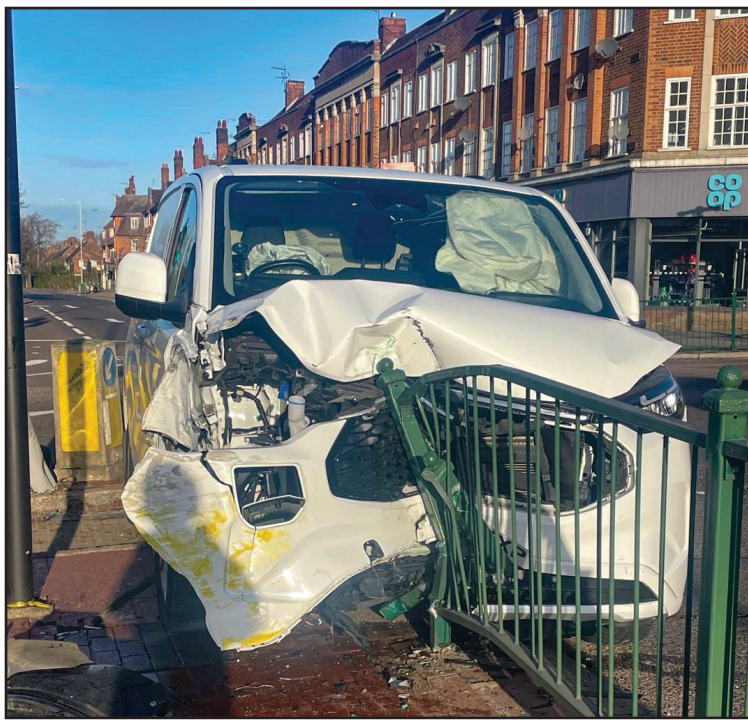
A car lies on its side on the pavement, debris scattered across the crossing, traffic lights twisted beside it. In another incident, a vehicle has mounted the railings, its front crushed into the pedestrian barrier. On a separate night, blue lights from ambulances and police illuminate a scene of chaos as emergency crews treat the injured.

For residents living near the junction of Ossulton Way and the A1 Lyttelton Road in East Finchley, scenes like these are disturbingly frequent.

Locals say serious collisions and near-misses have become commonplace at the busy junction, raising concerns about pedestrian safety. Many now say they feel unsafe simply walking along the pavement or crossing the road.

In 2017, a woman aged 96 died after being hit as she crossed on a pedestrian signal at the junction, in daylight and dry conditions. "Another serious accident feels inevitable," local resident Jeff Harris says. "There is clearly an issue with the current layout or signage. The authorities have a duty of care to ensure the roads are safe for drivers and pedestrians, so this needs rectifying urgently to prevent further serious injuries or loss of life."

The concerns centre on the design and operation of the junction, where traffic moving along the A1 passes through a residential and retail area. Residents argue that the layout, combined with vehicle speeds,



Two cars are wrecked after colliding with the metal barriers at the junction of Ossulton Way and the A1. Photos Samuel Burke

creates confusion and encourages dangerous driving.

A community group of Brim Hill residents has been in contact with local representatives and Transport for London (TfL), calling for a reduced speed limit, installation of red light and speed cameras, and a full review of the junction's

configuration. They also want improved pedestrian crossings and safer conditions for cyclists.

Barnet councillor Michael Mire says both he and fellow councillor Rohit Grover fully support the community proposals. "Both Rohit and I have been calling for changes to the

Fallden Way for over three years, including a zebra crossing for schoolchildren. The issue we face is the road isn't Barnet's, it's TfL's, which is run via the Greater London Authority." Mire has connected the group with Anne Clarke, London Assembly Member for

Barnet and Camden, who has agreed to meet with the Brim Hill community group. In response, Ms. Clarke confirmed that Transport for London is aware of the concerns and is currently assessing options.

Continues on Page 2

High Quality, Affordable German Kitchens

Will your next kitchen be a **küchenhaus** The German Kitchen

Hampstead Garden Suburb, Swiss Cottage & Islington

www.hsikitchenhaus.co.uk
0203 948 5006

Planning something special?

In this issue

Terrifying door stunt.....p3
 New family hub..... p4
 Murder trial starts.....p5
 Festival call-out.....p6
 Motorbikes in park.....p7
 Arts and culture.....p10

STEWART DUNCAN
 YOUR EAST FINCHLEY OPTICIANS since 1962

BUY PAIR OF GLASSES AND GET PRESCRIPTION SUNGLASSES COMPLETELY **FREE!**

STANDARD CONDITIONS APPLY FOR DETAILS ASK IN STORE OR
CALL 020 8883 2020

AMANDA WALKER exp

Trusted local estate agent with years of experience. Give me a call – I'd be happy to see how I can help.

Independent Estate Agent

- Sales • Lettings
- Property management

07817 598309

e.amanda.walker@exp.uk.com
w.amandawalker.exp.uk.com

Looking for volunteers?

Are you looking for volunteers to help in your community group or organisation? Our Be Part of It column is published on page 2 every month and gets results. Submissions are free and are included subject to available space. Please submit your listing up to a maximum of 80 words to news@the-archer.co.uk, marking your email 'Be Part of It'.

BRITISH PROPERTY AWARDS
 2021, 2022, 2023, 2024 & 2025
GOLD WINNER
 ESTATE AGENT IN EAST FINCHLEY

BRITISH PROPERTY AWARDS
 2022, 2023, 2024 & 2025
GOLD WINNER
 ESTATE AGENT IN MUSWELL HILL

PRICKETT & ELLIS ESTD 1767

East Finchley Office
 82 High Road, N2 9PN
 020 8883 0033
 eastfinchley@prickettandellis.com
 www.prickettandellis.com

Sales & Lettings | Surveyors | Valuers | Property Management | Financial Services