

Delivered free to 10,000 homes and businesses across East Finchley
The Archer is a non-profit-making, non-political & non-religious newspaper, run entirely by volunteers

Calls for review of dangerous junction

By Samuel Burke

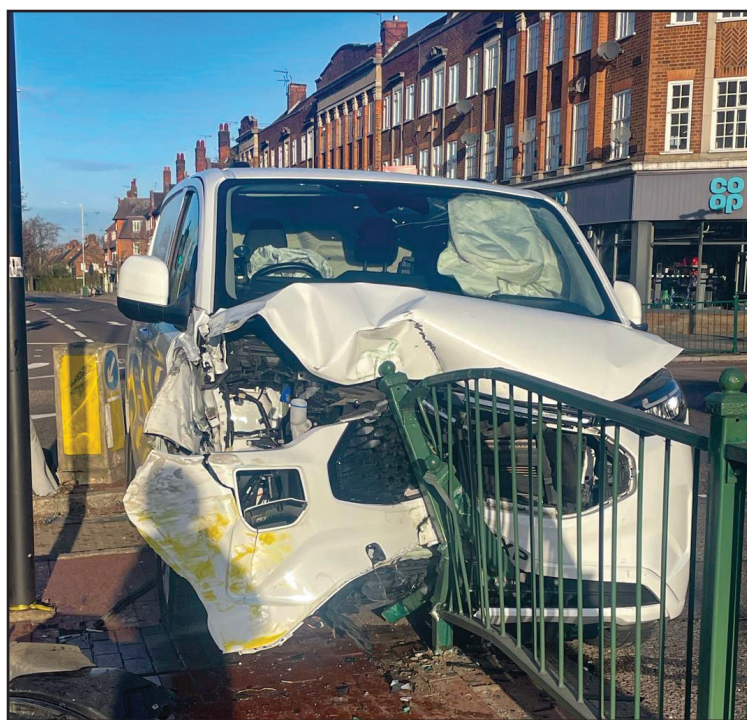
A car lies on its side on the pavement, debris scattered across the crossing, traffic lights twisted beside it. In another incident, a vehicle has mounted the railings, its front crushed into the pedestrian barrier. On a separate night, blue lights from ambulances and police illuminate a scene of chaos as emergency crews treat the injured.

For residents living near the junction of Ossulton Way and the A1 Lyttelton Road in East Finchley, scenes like these are disturbingly frequent.

Locals say serious collisions and near-misses have become commonplace at the busy junction, raising concerns about pedestrian safety. Many now say they feel unsafe simply walking along the pavement or crossing the road.

In 2017, a woman aged 96 died after being hit as she crossed on a pedestrian signal at the junction, in daylight and dry conditions. "Another serious accident feels inevitable," local resident Jeff Harris says. "There is clearly an issue with the current layout or signage. The authorities have a duty of care to ensure the roads are safe for drivers and pedestrians, so this needs rectifying urgently to prevent further serious injuries or loss of life."

The concerns centre on the design and operation of the junction, where traffic moving along the A1 passes through a residential and retail area. Residents argue that the layout, combined with vehicle speeds,



Two cars are wrecked after colliding with the metal barriers at the junction of Ossulton Way and the A1. Photos Samuel Burke

creates confusion and encourages dangerous driving.

A community group of Brim Hill residents has been in contact with local representatives and Transport for London (TfL), calling for a reduced speed limit, installation of red light and speed cameras, and a full review of the junction's

configuration. They also want improved pedestrian crossings and safer conditions for cyclists.

Barnet councillor Michael Mire says both he and fellow councillor Rohit Grover fully support the community proposals. "Both Rohit and I have been calling for changes to the

Falldon Way for over three years, including a zebra crossing for schoolchildren. The issue we face is the road isn't Barnet's, it's TfL's, which is run via the Greater London Authority." Mire has connected the group with Anne Clarke, London Assembly Member for

Barnet and Camden, who has agreed to meet with the Brim Hill community group. In response, Ms. Clarke confirmed that Transport for London is aware of the concerns and is currently assessing options.

Continues on Page 2

High Quality, Affordable German Kitchens

Will your next kitchen be a **küchenhaus** The German Kitchen

Hampstead Garden Suburb, Swiss Cottage & Islington

www.hsikitchenhaus.co.uk
0203 948 5006

Planning something special?

In this issue

Terrifying door stunt.....p3
 New family hub..... p4
 Murder trial starts.....p5
 Festival call-out.....p6
 Motorbikes in park.....p7
 Arts and culture.....p10

Looking for volunteers?

Are you looking for volunteers to help in your community group or organisation? Our Be Part of It column is published on page 2 every month and gets results. Submissions are free and are included subject to available space. Please submit your listing up to a maximum of 80 words to news@the-archer.co.uk, marking your email 'Be Part of It'.

STEWART DUNCAN
 YOUR EAST FINCHLEY OPTICIANS since 1962

BUY PAIR OF GLASSES AND GET PRESCRIPTION SUNGLASSES COMPLETELY **FREE!**

STANDARD CONDITIONS APPLY FOR DETAILS ASK IN STORE OR CALL 020 8883 2020

AMANDA WALKER exp

Trusted local estate agent with years of experience. Give me a call – I'd be happy to see how I can help.

Independent Estate Agent

- Sales • Lettings
- Property management

07817 598309

e.amanda.walker@exp.uk.com
www.amandawalker.exp.uk.com

BRITISH PROPERTY AWARDS

2021, 2022, 2023, 2024 & 2025

GOLD WINNER

ESTATE AGENT IN EAST FINCHLEY

PRICKETT & ELLIS ESTD 1767

East Finchley Office
 82 High Road, N2 9PN
 020 8883 0033
eastfinchley@prickettandellis.com
www.prickettandellis.com

Sales & Lettings | Surveyors | Valuers | Property Management | Financial Services



The Archer

www.the-archer.co.uk Email: news@the-archer.co.uk

@TheArcherN2

Voicemail: (messages only) 0800 612 0748 for editorial and general enquiries

Published by East Finchley Newspapers CIC
Registered in England & Wales company no 14524944

Copy Editor John Lawrence	Production Editor Nadia Savvopoulou	Editorial Team Ruth Anders, Diana Cormack, David Hobbs, Janet Maitland, Lynn Winton
Sub Editors Lucy Moorman Fiona Macdonald	Distribution Toni Morgan, Jane & David Marsh	Social Media: Justine Csaky
Picture Editor Mike Coles	Finance David Marsh	

Printed by Sharman & Co Ltd on 100% UK-sourced recycled newspaper
The Archer team wishes to thank all the generous volunteers who give up their spare time, in all weather, to deliver the paper for us.
Thank you to The East Finchley Constitutional Club for providing us with a meeting place.

Copy deadlines - June: 15 May July: 15 June August: 10 July

Changes needed at junction

Continued from Page 1

“TfL have advised that they are modelling improvements to pedestrian crossings in the area, taking into account safety and traffic conditions,” she says. “I will continue to monitor the situation closely and lobby TfL on behalf of Brim Hill Community Group to fix this issue as quickly as possible.”

A TfL spokesperson notes that as part of TfL’s Lowering Speed Limits programme, they reduced the speed limit from 40mph to 30mph on a nearby stretch of the road between the A406 and Addison Way, in June 2025.

“Across the capital, we use a data-led approach to reducing danger and targeting investment in safety improvement projects,” the spokesperson says. “We review the information every year, and if data demonstrates a case to take action, we will prioritise Falloden Way in the future.” Local residents say they remain on edge. Nigel Someck was getting his haircut when a crash happened next to him. “Only by the grace of God, nobody was walking by the barrier. They would never have survived,” he says. “The driver in the mounted car was injured



Collision: Residents say the junction is dangerous for drivers and pedestrians alike. Photo Samuel Burke

but was able to get out. It was a horrific scene. My kids cycle up to that barrier all the time. Eventually, someone will get hit again if nothing changes.”

BE PART OF IT Volunteers wanted

Compiled by Lynn Winton

Dovetail DaCapo is a friendly place where asylum-seekers and refugees meet to make music together on Saturdays from 2pm to 3.30pm at Wren Academy, N12 9HB. The music is followed by a shared vegetarian meal. If you are interested in joining the rota of volunteers who prepare the meal (heating up soup, putting out bread, hummus, fruit, etc), they’d love to hear from you. They are also interested to hear from volunteers who would like to help in other ways. jam@dacapo.co.uk

Food Bank Aid provides essential goods to 33 food banks who in turn support over 20,000 people per week. Do you have spare time to sort and pack donations or are you a keen driver who could deliver donations to food banks in North London? The organisation’s North Finchley hub is a fun place to work in, with friendly people, music, cake, tea and coffee. Flexible shifts are available. To apply, please drop an email to volunteering@foodbankaid.org.uk and put ‘The Archer’ in the subject line.

Age UK Barnet always needs volunteers to help in its Tuesday or Thursday day clubs in East Finchley, which are for people living with mild to moderate dementia. By chatting to people, helping with activities and serving lunch and refreshments, you will help to make the club a warm, welcoming and stimulating environment for members. To find out more please contact Lisa on lisa.robbs@ageukbarnet.org.uk or call 020 8432 1422.

The **Together Project CIO** is looking for a Group Welcomer to support its Songs & Smiles sessions at Spring Lane Care Home, Muswell Hill. The group runs on Mondays at 11am, bringing young children and older residents together through music and play. The Welcomer helps greet families, supports the session leader, and creates a warm, friendly atmosphere. If you’re interested, please email songs@thetogetherproject.org.uk

Volunteer stewards are wanted at **OmVed Gardens** in Highgate Village to welcome visitors, answer questions, signpost around the site and support Open Days and other events. This is a friendly, outdoor role with a chance to be part of a community and enjoy free access to some events. No experience needed, just enthusiasm and a love of people and nature. Contact enquiries@omvedgardens.com to register your interest or for more info.

If you’d like your organisation to be included in this column please email news@the-archer.co.uk

Star guests for symphony orchestra

Finchley Symphony Orchestra will be joined at their next concert by Ukrainian violinist Valeriy Sokolov, one of the outstanding artists of his generation with a worldwide reputation. He is making a welcome return to play Mozart’s Sinfonia Concertante in partnership with Paul Zientara, himself an international prize winner.

The orchestra will also play Mendelssohn’s overture to ‘Ruy Blas’. The play by Victor Hugo is violent and Mendelssohn’s overture is suitably dramatic.

Schumann’s D Minor Symphony completes the program. The concert takes place on **Saturday 16 May** at Trinity Church, Nether Street, N12 starting at 7.30pm. Tickets are

£18, £15 for those under 26 and over 60, £2 for those under 18 and you can save £1 per ticket by booking online at www.finchleysymphony.org

PLANNING APPLICATIONS

Barnet

First Floor Flat, 45 Park Hall Road, N2

Use as two self-contained flats. Ref. No: 26/1404/191

Fairacres, 164 East End Road N2,

Submission of details of general condition of planning permission Biodiversity Gain Plan of 25/1113/FUL dated 22/01/25. Ref. No: 26/1059/BNG

1 and 1A Beresford Road, N2

Conversion of two self-contained flats into a single dwelling house. Ref. No: 26/1339/192

Ground Floor Flat, 21 New Trinity Road, N2

Variation of condition 1 (Approved plans) pursuant to planning permission 25/3358/FUL dated 06/10/2025 for ‘Single-storey side/rear extension with five roof lights’. Amendments include removal

of the lightwell. Ref. No: 26/1289/S73

260 East End Road, N2

Second floor extension. Ref. No: 26/1169/FUL

99 Hertford Road, N2

Roof extension involving rear dormer windows and front and rear facing roof lights and solar panels. Removal of the chimney stack. Ref. No: 26/1118/192

62 Huntingdon Road, N2

Roof extension involving rear dormer window with juliet balcony and two front-facing roof lights. Ref. No: 26/1077/192

456 Long Lane, N2

Roof extension involving rear dormer window with juliet balcony. Ref. No: 26/1050/192

55 Summerlee Avenue, N2

Single-storey rear extension with two roof lanterns. Ref. No: 26/1048/HSE

Haringey

Flat C, 15 Southern Road, N2

Replacement of windows and a door on the front, rear and side elevation. Ref: HGY/2026/0667

18 Southern Road, N2

Demolition of the existing garage and ground-floor WC and erection of single-storey rear extension. Enlargement existing first-floor rear window. Ref: HGY/2026/0782

3 Shakespeare Gardens, N2

Proposed alterations to roof form to extend the existing gables to form eyebrow gable roof elements; formation of two dormers and the installation of two roof lights (similar to those approved under (HGY/2025/2020). Ref: HGY/2026/0450

21 Aylmer Road, N2

13 x Leylandii - Cut entire trees as close to ground level as practically possible. The trees are an unsuitable species for the location. They are lifting up the drive and gate. Ref: HGY/2026/0850

Get results! advertise in

Your unique access to nearly 10,000 homes and businesses in East Finchley

Generous rates for a range of sizes

The Archer

For more details check www.the-archer.co.uk/ads_index.php or e-mail advertising@the-archer.co.uk



Door kick stunt terrifies homeowners

By Lynn Winton

It was an early morning in mid-March and retired couple Gina and Alvin Lennard were barely awake in their house in the quiet enclave of Ludlow Way, N2.

Alvin recalls: "Gina was still upstairs and I was bringing her a cup of tea when we heard this almighty crash coming from downstairs. It sounded like a terrific thunderclap and we were terrified."

"Whatever it was had split the front door frame from top to bottom. We called the police who came quickly and they were as mystified as us. They even asked us if we had any enemies. That night we just couldn't sleep. Gina has lived here for 48 years and was really, really upset." All was revealed the following morning when another four households in Ludlow Way were woken by a similar experience, and video doorbell footage clearly identified three boys taking it in turns to violently kick the front doors, with one of them filming the action. A quick-thinking neighbour drove around the streets and found them. They were all pupils of Christ's College Finchley (CCF), off East End Road. The school have confirmed this and have supplied The Archer with the following statement: "The school is aware of an ongoing police investigation and is fully co-operating with the police. As this is an active police investigation, we are not able to disclose any further details". What the CCF students were doing was taking part in the 'Door Kick Challenge', which has gone viral on social media.



Kicks for kicks: Three students are caught on a security camera approaching the front door of a house in Ludlow Way, N2

Participants, typically teenagers, aggressively kick residential doors, then run away. The aim is to kick the door down and cause significant property damage. Then the video of their 'success' is posted on TikTok.

Alvin and Gina hope that, once the police investigation concludes, the school will take up the offer from the Ludlow Way residents to meet with the pupils and explain to them the awful effects of their actions.

"Those of us affected by this vandalism, in some cases quite badly," says Alvin, "would be far better placed to point out that such actions have consequences than uninvolved teachers."

Gina, well known in the community as the former practice nurse at Heathfield Surgery,

adds: "Have they even considered they could kick down a



Serious damage: An inside view of the door kicked loose from its frame

heavy wooden door where a baby was crawling behind it, and be responsible for its death? Is anyone else, school or parents, having this conversation with them?"

Muswell Hill car boot sale

The next Muswell Hill Indoor Car Boot Sale takes place from 10am to 1pm on Saturday 30 May at Hornsey Parish Church Hall, on the corner of Cranley Gardens and Park Road, N10 3AH. Buses

W7, W3 and 144 stop nearby. Admission is 50p (cash only) and refreshments are available. Also open between 10am and 1pm is the Basement Bookshop below the hall.

Cash awards for community groups

Two community groups have won awards worth between £5,000 and £10,000 as part of Barnet Council's cultural and heritage project Light and Flight.

East Finchley Community Trust was given financial support for its collaboration with The Finchley Pollinator Project on the Pollinators, Pathways and the Historic Walks of Finchley community heritage project.

Running from February 2026 to February 2027, it seeks to reconnect people, green spaces, and local history through three historic walking routes. Art Against Knives, which has

a base in the High Road, N2, was also a recipient for its community archive project making it possible for more than 50 socially excluded young people to illuminate forgotten spaces across the borough. Barnet Council awarded £70,000 in total to support 10 community-led and locally based heritage projects. The Light and Flight grant programme, supported by The National Lottery Heritage

Fund, is designed to allow artists and residents to uncover hidden histories, share stories and create new work inspired by Barnet's past, present and future.

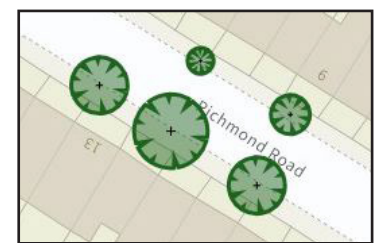
Awards also went to the Burnt Oak Nepalese Community, the Stonegrove Estates Youth Project, Colindale Communities Trust and Barnet Education Arts Trust, among others.

AJL APPLIANCES
 ■ Sales
 ■ Repairs
 ■ Installations
 020 8444 4303 www.ajlappliances.co.uk
 ■ Washing Machines ■ Dishwashers ■ Ovens
 ■ Tumble Dryers ■ And many more...

Identify a tree

Did you know you can find a tour of all of East Finchley's street trees and potential new planting sites thanks to an interactive online map?

The tree portal allows you to search addresses and find the details and eco-benefits of trees planted nearby, as well as any works carried out on them. Go to <https://barnet.ezyportal.com/Trees/Map>



Pasture opens

With spring well under way, much-loved local nature reserve Long Lane Pasture is opening up to the community again for the next six months or so.

The volunteers who run the wildlife haven opposite Finchley Fire Station in Long Lane, N3, hope to open every day from 9am to around 7pm, although not in bad weather.

They invite visitors to come and see the changes and progress that their working teams have made over the winter months, including making some of the paths wider and developing a scented winter garden near the gazebo in memory of stalwart volunteer Wayne Armsby.

20% OFF!
ONLINE CODE:
brudis118

BRUDIS
 Burger & Burger

SCAN ME

ORDER ONLINE NOW!
FREE DELIVERY
WITHIN 2 MILES!
 MINIMUM SPEND: £20

brera gardens

- garden design
- maintenance
- hard landscaping
- irrigation systems
- soft landscaping
- East Finchley based
- indoor plants

Mob. 07939 557 934 Tel. 020 8365 3615
 Email: breragardens1@btinternet.com



Family hub to provide better start in life for young children

By Margaret Crockett

Newstead Children's Centre in Fallows Close, off Tarling Road, N2, is to be rebranded with the help of extra funding to become a Best Start Family Hub. The Best Start in Life strategy focuses on ensuring that all children have access to high-quality care, learning opportunities and support so they can thrive and be ready for school.

The early years of a child's life, up to age five, are a vital period for development. Local MP Sarah Sackman successfully campaigned for the new facility, pointing out that a high level of East Finchley families experience deprivation.

Around the Grange and Strawberry Vale estates there is a significant proportion of children living in households below the median income and with a higher reliance on support services.

She stated: "Children in East Finchley deserve the best start in life and I am proud that our local campaign has been successful in placing a Best Start Family Hub at Newstead Children's Centre. This Best Start Family Hub will be transformative for many children and parents in Finchley and Golders Green."

The Government announced in late March that families struggling with the cost of living can save money on services as hundreds of new Family Hubs open. This brings services together under one roof, making it easier to get help at the right time. Investment over the next three years will provide more joined-up support.

Eligible families can save an average of £9,250 a year through funded childcare, free breakfast clubs, expanded free school meals, holiday activities and food programmes, alongside the expansion of Best Start school-based nurseries.

Family Hubs offer 'stay and play' sessions where parents and their children can meet other families, advice and courses to boost parents' confidence, support with children's speech and language, help in managing their behaviour and emotional needs, guidance on creating positive home learning environments, plus health services and advice. Beyond early years, there are also activities for young people.

Newstead Children's Centre is Barnet's East Central Hub. Families can contact the Centre or pop in to find out more.

Andy Whiting, Early Years and Primary Service Manager at the Centre, explained that the team aims to "build on the successes of the Surestart Children's Centres and Child and Family Early Help Hubs. The Best Start in Life strategy highlights the importance of engaging parents and carers to help plan future service delivery."

Looking for volunteers?

Are you looking for volunteers to help in your community group or organisation? Our Be Part of It column is published on page 2 every month and gets results. Submissions are free and are included subject to available space. Please submit your listing up to a maximum of 80 words to news@the-archer.co.uk, marking your email 'Be Part of It'.

Tell us the news

Have you got a news story or an interesting photo for us? Our readers are our eyes and ears, and we are always pleased to hear what is going on in East Finchley. Tips, ideas and stories, large or small, are very

The Archer online

The Archer's website is now easier to use on your mobile phone. Our online pages have been redesigned to make it quicker to find important information like contact details and deadlines, and simpler to read our latest edition or search and browse past editions of the newspaper in our archive stretching back to 1993. So now you really can take The Archer with you wherever you go. Bookmark our website at www.the-archer.co.uk

welcome. Please email news@the-archer.co.uk or leave a message on our free phone line **0800 612 0748**. Thank you



Nalin Shah, centre with sashes, surrounded by customers and friends at his farewell party. Photo Geoffrey Davies.

Goodbye to store owner after 47 years

More than 50 people gathered at Galaxy Drug Store in Church Lane, N2, at a farewell party for owner Nalin Shah as he retired from the family business after 47 years of selling essential household goods.

The sun sparkled, a giant red heart balloon donated by Jenni Mann Flowers next door was hurled into the clouds by a fierce gust of wind, dainty homemade samosas were served on bright orange plates and a huge cake was cut. And then another appeared, like magic.

Everyone sang For He's a Jolly Good Fellow. Nalin made a speech that was wise, funny and heart-warming. He spoke of helping out in his parents' textile shop in Tanzania, saying: "They taught me that only people have value, not money - and the importance of civic duty."

"I'm delighted with everyone who donated to Nalin's retirement fund," said Darren Mitchell, who organised the farewell party at the end of March. "He's a great man with a kind-hearted soul. Thank you, Nalin, for your years of service to the community. We appreciate you, sir." Galaxy Drug Store adverts from over the years were stuck to the windows as testaments to the shop surviving the recessions of the 1980s and 1990s, the crash of 2008 and Covid 19. When King Charles was crowned, Nalin

strung bunting across the shop. "Well, cash is King," laughed his sister Indira. "He never set up digital payments."

Friends and neighbours talked of Nalin's knack of always having what you needed and, if he didn't, his willingness to get it for you. And there was often a kind of serendipity at work: you'd pop in for some Brillo pads and come out carrying an enormous water pistol and a birthday card.

But Nalin mattered more to people than just what he sold. "It's the chats that I'll miss, and his generosity and kindness," said Liz, who's lived on Church Lane for 38 years. "He helped me so many times, especially when I opened 19 years ago," said Rasan, from Apiavi, another family business nearby. What of the future? A few people wanted something similar, like a family-run hardware store. Others didn't want to think about it as it was Nalin they wanted, really. But everyone was adamant about one thing: they didn't want another coffee shop.

Woodland dates

A public meeting is being held by the Cherry Tree Wood Café on Wednesday 6 May at 6pm where everyone is welcome to come along and hear what has been happening in the wood and what plans there are for the year ahead. On **Sunday 10 May** from 4pm to 5pm there will be a litter pick to keep the wood tidy. Volunteers are welcome to join in. Meet by the café. For more information, email friendsofcherrytreewood@gmail.com

Nature club

The Friends of Cherry Tree Wood are launching a nature club for children to be held on the first Sunday of each month. Starting on Sunday 3 May, children aged eight and under with parents or carers are welcome to this free event to be held at the Nature Circle next to the playground. No booking is needed, just turn up at 2pm to spend an hour discovering nature together. Future dates are Sundays 7 June, 5 July, 2 August, 6 September and 4 October.

From The Archer archives...

By Jane Marsh

**10 years ago:
May 2016**

Staff at the Phoenix Cinema paid tribute to longtime friend Victoria Wood, who died in April 2016. Head of Cinema Kate McCarthy said: "Victoria will always hold a special place in the heart of the Phoenix. She was a generous and charming woman who created a sparkle whenever she visited, and we will remember her with warmth and joy."

**15 years ago:
May 2011**

We highlighted plans progressing to keep Stanley Road Playing Field for sport and recreation, with the support of the London Marathon Trust. Later in the same issue we reported on local parents' call for a new secondary school in East Finchley, at a public meeting organised by the campaign group Local Schools for Local Children. As we now know, the new school initiative won the day, and part of the Archer Academy now stands on what was the Stanley Road Playing Field.

**25 years ago:
May 2001**

In April 2001 a milk float, several cars and a house in Leslie Road were attacked with stones and bricks, mid-morning in broad daylight. The windscreen of the milk float was smashed and the driver injured, resulting in serious bruising and cuts requiring nine stitches. After a police chase, four local boys, thought to be responsible, were apprehended and taken into custody.



Brothers on trial for murder of Anthony Littler 42 years ago

By Danny Shaw

Two brothers have gone on trial charged with the murder of Anthony Littler, who was violently attacked as he walked home from East Finchley tube station in May 1984.

Michael Stewart, 57, and Anthony Stewart, 60, were among a group who “ambushed” the 45-year-old civil servant in an alleyway leading from the station to East End Road as he returned shortly after midnight from a pub in south London, the Old Bailey heard.



Victim: Anthony Littler

Opening the prosecution case on 20th April, John Price KC said the attack on Mr Littler, who lived in a flat on Leslie Road, N2, was not the only time that the brothers, aged 15 and 18 at the time, had used violence on men in public. “For quite a while this had been a habit or hobby of theirs. It was something they enjoyed doing. They had begun by targeting men whom they thought might be homosexual,” he said. The jury was told that Mr Littler was struck with an iron bar, baseball bat or length of wood, sustaining two skull fractures and a “catastrophic”

brain injury. He was found in a pool of blood about 100 yards from the exit of the footpath on East End Road. He had credit cards and £80 in cash still on him and his black briefcase was next to his body.

Moments after the attack, Michael Stewart made a 999 call from a public phone box “in panic” when the assailants realised the severity of Mr Littler’s injuries, said Mr Price. “They fled the scene, without pausing to grab his briefcase or to go through his pockets,” he said.

According to the prosecution, the Stewarts confessed their involvement in the crime to their younger brother Daniel, who was ten at the time and lived with Michael and the boys’ mother in Prospect Ring, N2. It’s also alleged that Michael Stewart “bragged” about the attack to a former girlfriend. In 2022, police re-opened the murder inquiry for the fourth time, deploying covert investigative techniques. The brothers’ cars were bugged and Michael Stewart was “befriended” by two female undercover officers who secretly filmed and recorded their conversations.

Michael and Anthony Stewart, who are both in custody, have pleaded not guilty. The trial is expected to last until mid-June.



A 1984 photo of the path where Anthony Littler was attacked



Under threat: The trees at the front of the Park Road site. Photo Mike Coles

Developer reveals plans for homes site... and trees will be removed

By Lynn Winton

The developer buying the Park House site opposite East Finchley tube station (The Archer, April 2026) intends to submit a planning application for 70 or more private homes once the purchase of the site from Barnet Council is complete.

Oliver Kuropatwa, whose property company London Placemaking is buying the site, revealed the scale of his plans at a meeting with East Finchley residents.

In addition, both he and Barnet Council have confirmed that there will be a replacement nursery on the site as part of the agreement. Monkey Puzzle Nursery currently uses Park House but is moving to another location further up the High Road to avoid any disruption from building work.

However, he also disclosed that in order to achieve this, the five established trees that line the front of the site will be destroyed. This came as a shock to the attending residents, many of whom had successfully helped to put these trees under Tree Preservation Orders (TPOs). It is not illegal to propose removing a TPO tree, but it would require consent from Barnet Council, who would be obliged to consider the amenity value, health and condition as well as public benefit versus harm. There is a strong presumption in favour of retention, especially for prominent groups of healthy trees that contribute to character and street frontage, such as these.

Roger Chapman, Chair of the Friends of Cherry Tree Wood, has written to Mr Kuropatwa to point out that, given the

sensitivity of this site and the strength of local feeling, it is important that any emerging proposals are clearly grounded in planning policy.

He told The Archer: “We’re not against development at Park House, but selling the site doesn’t remove the Council’s responsibility to get the scheme right.

“These protected birch trees and one protected yew tree are

a valued part of the site and townscape, and there’s no clear evidence their loss is unavoidable. What’s needed is a better, policy-compliant design that works with them, not against them.

“If the developer continues to bring forward plans that do not follow the policies of the local plan we shall vigorously oppose them.

THE MUSWELL HILL CLUB FITNESS AND LEISURE

Over 100 classes per month • Swimming Pool
Cardio floor • Free weights rooms • Sauna & Steam rooms
Spin studio • Coffee bar • Stretch room • Friendly team

DAY
PASSES
£15

Membership
From
£44.95
T&C's Apply



140 FORTIS GREEN, MUSWELL HILL N10 3EF 0208 883 0500
INFO@MUSWELLHILLCLUB.COM THEMUSWELLHILLCLUB

Join online NOW muswellhillclub.com

KOKOS
SHOE REPAIRS
SINCE 1976



WE’VE MOVED TO
UNIT G14 ATLAS BUSINESS CENTRE
OXGATE LANE, LONDON NW2 7HJ

WE OFFER FREE COLLECTION AND DELIVERY
FOR N2 AND N10

PLEASE CONTACT US FOR MORE INFORMATION

020 8883 0876
www.kokos.co.uk
@kokosfinchley

Kundalini Activation & Family Constellations

From April 11 - scan QR
for more info & bookings
or mail gill@gilldavis.com





Could you be a volunteer at the Festival in 2026?

By Catherine Stewart

East Finchley Festival organisers are appealing for volunteers for this year's event as they make plans for the hugely popular annual fixture to return to Cherry Tree Wood on Sunday 21 June.



Fun in the crowd: Festival goers enjoying last year's event in Cherry Tree Wood. Photo Mike Coles

Organisers are looking for volunteers to help out in a range of areas, both before the festival and on the day. Roles include an activities coordinator, stewards and traffic marshals, raffle ticket sellers and helpers for set-up.

They are keen to hear from anyone who can spare an hour or two on the day of the festival or who would like to join the organising team to be part of the final preparations.

East Finchley Community Festival, now in its 52nd year, is free to attend and funded entirely by donations and sponsorship from local businesses and organisations. As always, there will be live music and performances across two stages, and festival-goers will be able to enjoy a variety of international food and drink, a large craft and makers' market, along with sport and children's activities.

Festival manager Alison Roberts said: "Whether you can commit an hour or two a week, or just some time on the day, we have areas that need the support and expertise of our local community.

"We have a great team here at the Festival, who work hard to put the best possible event on each year, and we have a lot of fun doing so.

"We'd love to welcome anyone in the area who wants to join our group and help out in any way they can, so we can continue to make the festival such a wonderful day for everyone in and around East Finchley."

For more information about volunteering or sponsorship, please visit the East Finchley Festival website at www.eastfinchleyfestival.org

Town Team's first town square event

East Finchley Town Team along with residents and local groups are set to gather on Saturday 2 May between 2pm to 4pm to mark the opening of the newly improved public space on the High Road, N2, and to launch a campaign for its future as a town square.

Outside Amy's there will be music and performances to enjoy by Fixation Academy and local singing groups, along with a glitter bar and Tai Chi.

The recent removal of one of the shrubbery beds, supported by a small grant from Barnet Council, has created a more flexible, event-friendly area (The Archer, April 2026). The space is intended to support markets, community events and activities that bring more people onto the High Road. Details are on display in Egg and Bake, 122 High Road, N2.

However, the changes have also prompted discussion locally, particularly around

the loss of planting and how the space can best reflect wider ambitions to increase greenery and biodiversity.

Kate Brown, Chair of Town Team, said: "This is a first step, not the finished scheme. We've created a space that works better for the community; now we want to work with the council and local people to make it greener, more attractive, and something East Finchley can be truly proud of."

The Town Team would like to hear your ideas and suggestions on how the High Road can be improved and ideas for what they should do next. You can contact them at eftownteam@gmail.com



Back yard beauty: Visitors soaking up the atmosphere at Patsy Bailey and John Rance's garden in Muswell Hill

Get inspired by garden ideas

By Lynn Winton

It's the time of year when keen gardeners are frantically preparing to open their gardens to visitors for the National Garden Scheme, which raises millions of pounds for a host of nursing and healthcare charities, including Macmillan Nurses.

Visitors supporting their efforts will be able to enjoy a beautiful garden, tea and cake; and some will have a plant stall and various craft items for sale. It's a wonderful way to spend some time gathering ideas for your own garden, asking the owners for tips or just to while away an afternoon sitting in someone else's garden and meeting local friends.

Coming up on **Sunday 10 May** is perennial favourite 17 Princes Avenue N10, where owners Patsy Bailey and John Rance are busy taking cuttings and dividing plants for their plant stall, keeping slugs and snails off their renowned

Hosta collection and planning what cakes to make, including gluten-free and vegan options. There's a real garden party atmosphere with music from the Secret Life Sax quartet. It's a combined £6 entry with their near-neighbour's very different garden at 28 Princes Avenue.

In the heart of East Finchley, artists Stephen and Ruth Kersley are opening their beautiful garden at 66 Abbots Gardens, N2 on **Sunday 7 June**. There's a combination of dramatic grasses and fused glass, with mosaics surrounding a water feature. Fused glass amphorae, feathers, and leaves catch the eye amongst grasses,

ornamental shrubs, and perennials. A rose-bedecked archway leads to a quiet space with a vegetable plot, silver birches, and a slate pebble fountain.

Opening on **Sunday 19 July**, there's another local gem at 24 Twyford Avenue, N2, where Rachel Lindsay and Jeremy Pratt have created a traditional 'tea garden' set amidst vibrant cottage garden planting, with hidden shady nooks to explore.

Information about all the gardens is available online at ngs.org.uk and in the 'Yellow Book' available in garden centres, libraries and at the open gardens themselves.

That's worth a cuddle!

North London charity All Dogs Matter celebrated a £7,170 donation from new partners Raffle House, enough to support their animal welfare work for a week following a recent surge in pets being abandoned.



A gesture of appreciation from a happy dog

The charity, headquartered in East Finchley with a shop in Muswell Hill and kennels in Waltham Abbey, was founded

in 2009 by Ira Moss and actor Peter Egan. Its largely volunteer staff take about 30 calls each day and rehome between 350 and 400 dogs every year.

Last year, All Dogs Matter entered into a partnership with Raffle House, a prize draw provider that gives away multi-million-pound homes. When purchasing tickets, players can decide which charity they want to support.

"Already, the funds have made a big difference, being equivalent to the cost of an entire week of our operations," said Ira Moss. "We need £1,000 a day to run All Dogs Matter including veterinary costs, medicine, food, kennels and emergencies.

"Like other kennels in London, we are being overwhelmed as owners give up pets they can no longer take care of, many of which were purchased from unscrupulous breeders."



Alarm over motorbikes in Cherry Tree

By Cobi Jacobs

A local grandparent has contacted The Archer with an alarming video of a motorbike being ridden through Cherry Tree Wood.



Anti-social: A motorbike rider is seen doing a wheely on a pedestrian path in Cherry Tree Wood close to the children's playground

The incident took place on 1 March, and the video appears to show the rider reaching speeds of well over 20 mph along footpaths, including close to the children's playground and café, and on trails throughout the woods.

Perhaps most alarming is that the video appears to show a young child estimated to be around six to eight years old sitting on the rider's lap.

The incident is reported to have lasted 15 minutes. No injuries have been reported and it is unclear whether anyone challenged the rider at the time. The incident was reported to Barnet Council, who have responded to the complainant stating that it intends to increase security visits to the Wood, but would

be unable to take any further action without being able to identify the rider.

Roger Chapman, co-chair of Friends of Cherry Tree Wood, confirmed to The Archer that this was not an isolated incident. He said: "The use of motorised bikes is prohibited in Cherry Tree Wood for reasons of safety. This is an extremely dangerous activity in such a popular park. It is our collective responsibility to report such anti-social behaviour."

If people think there is a threat to life, they should ring the police on 999. Otherwise report it to Barnet Council at <https://myforms.barnet.gov.uk/xfp/form/35> or ring Barnet Council on 020 8359 2000.

New season at tennis club

Fortis Green Tennis Club is opening its new season with a special offer for new members as the club goes from strength to strength.



Court action: Fortis Green Tennis Club

As we reported last year, an application for housing development on part of the club's site off Southern Road, N2, was refused by Haringey Council.

So with the new season starting, the club is inviting new

members to join for £50 (normal annual fee £170). You should not have been a club member before and the offer price applies for the first year of membership only. The four clay courts are



Good deeds: Volunteers meet each other at the Archer Academy tea party

Academy tea party to say thank you to volunteers who support school life

By Katie Ruback

Archer Academy in East Finchley welcomed volunteers and alumni for a special afternoon tea party, bringing together members of the school community to celebrate the many individuals who generously give their time to support students and staff.

Volunteers play a vital role at the secondary school. Their involvement includes helping at school events, reading with

students in the library, serving as Governors, working in the school garden, supporting the Parents' Association, delivering careers talks to students, and acting as class representatives. The tea party, hosted by head-teacher Lucy Harrison, also welcomed back several former students, who were recognised for their continued involvement, including mentoring current pupils, offering advice

about life after school, and supporting school events. Miss Harrison said: "As a school rooted in its community, we are incredibly grateful to everyone who generously gives their time and expertise to support our students and wider school life. Their contributions enrich and strengthen our school, playing an essential role in making Archer such a special place to learn and grow."

Hospital expansion

Whittington Hospital in Archway has unveiled plans to expand the size of its busy Emergency Department (A&E) unit.

The department currently cares for around 110,000 seriously sick or injured adults and children each year, despite the fact that when it was opened in the late 1970s it was designed to treat less than half of that number.

The trust will open a new same-day emergency care unit next to the A&E department which will treat people who need urgent care but do not need to stay in hospital overnight.

bookable online. An inclusive policy uses a system of pre-arranged games, helping new joiners meet others and integrate quickly. The grounds are a safe environment for families and children. There is coaching available for adults and juniors (members and non-members), along with competitions and social events.

For further information visit the club's website clubspark.lta.org.uk/fortisgreentennis-club or contact Liz on lizhanchet@gmail.com.

You saw this
Your customers will too

Advertise in **The Archer** and reach 10,000 homes and businesses across East Finchley

Find more information at www.the-archer.co.uk/ads_index.php or email advertising@the-archer.co.uk



International stars visit Finchley Rugby

Former Finchley Rugby junior player Kelsey Clifford, now a World Cup winning Red Rose and Saracens prop forward, opened the club's Centenary gym in Summers Lane, N12, in front of an enthusiastic gathering of parents and club members in March.



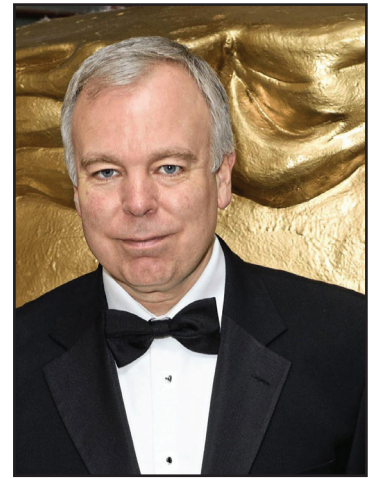
New facility: Saracens player Kelsey Clifford with Finchley Rugby juniors outside the club's new gym

Designed and built by club volunteers, led by Chris Grilli, the gym will support the development of players across the club and offer facilities to all

club members. Later the same month Ugo Monye, broadcaster and former England and Harlequins winger, put a group of current and former Men's and

Women's players through their paces for an energetic training session. Ugo's visit was aimed at supporting players' injury

prevention and remaining active. It was filmed by Arthrosamid, a company providing alternative, non-surgical solutions to knee osteoarthritis players.



Phoenix date: Steve Pemberton

Steve Pemberton at the Phoenix

Stand by for a very special fright night at the Phoenix on Saturday 16 May, when local celebrity Steve Pemberton will host a showing of the 1973 horror comedy *Theatre of Blood*.

Starring Vincent Price and a cast of other famous names, the cult classic was one of the inspirations behind the long-running BBC TV series *Inside No 9*, written by Steve and his partner in crime Reece Shearsmith. Steve will be there for a Q&A at the end of the movie, and the event will also see the launch of the cinema's exciting new fundraising campaign. Keep an eye on www.phoenixcinema.co.uk for further details of what promises to be an unmissable evening.

Awards and inspiration at the Academy

As another school year approaches its end, two Year 7 students at the Archer Academy, Suki and Joe, reflect on their attendance at the school's annual prize giving ceremony.

Every autumn, Archer hosts its annual Prize Giving Ceremony to celebrate students' achievements from the previous academic year. This year, we were thrilled to be part of the 'Year 7 Young Reporters' team, where we not only attended the exciting ceremony but also had the opportunity to interview award winners, their families, and special guests.



Ready to report: Year 7 journalists at the Archer Academy prize giving

The ceremony featured an impressive line-up of guests, including local councillors and the incredible actress Carolyn Pickles, best known for her role as the Muggle Studies teacher in *Harry Potter and the Deathly Hallows*.

Prize Giving is a celebration of hard work, talent, and dedication. We watched students proudly receive their awards, enjoyed beautiful dance performances, and had the chance to speak with some inspiring people.

We asked Carolyn Pickles what skills she thought were most important for young people to develop and what inspired her to become an actor.

She told us: "I think that listening is very important, as is nurturing friendships. People's stories and working with a variety of people really inspired me, as well as working on plays that solve problems."

We asked a student who won the dance award what advice they would give to someone in Year 7 like us. They said: "I am

passionate about dance, and I put a lot of effort into it. Never give up and always try your best."

We asked a school governor how they helped the school. They said: "A school governor makes the school a better place and supports staff."

Prize Giving is important because it ensures students are recognised for their achievements and hard work. Recognition motivates them to keep striving for success. For us Year 7s, it encourages us to aim high for the future. We thoroughly enjoyed the experience; it was eye-opening, exciting, and something we will never forget.



Star guest: Carolyn Pickles

Stay all night at the school!



Sleep in: Holy Trinity pupils bed down in the school hall for the fundraising event

Year 5 and Year 6 pupils and teacher volunteers slept overnight at Holy Trinity Primary School on a Friday night in February to raise money for the Church Urban Fund, which supports homeless people by giving them food and temporary shelter overnight.

The youngsters listened to a talk about homelessness from school priest Father Marius and also created artwork based on homelessness before sleeping on the floor on PE mats.

The children also completed some artwork based on homelessness to raise awareness, as well as writing poems and acting.

The heating was also controlled by the supervising staff to help everyone understand the feeling of sleeping without choice on the streets. The whole event raised more than £1,000 for the charity and you can still boost the total by donating at www.justgiving.com/page/holytrinity-sleepout2026



To the World Cup... the long way round



Top of the world: Nick's planned route to America, via Denmark, Iceland and Canada; Nick, right, with his fellow cyclist Pete on their ride through Finland last year



Delight at having got a prized ticket for England v Ghana at this summer's World Cup has given Nick Woodward the excuse he needed for another exciting bike trip after last year's two-month, 6,000km epic journey from the Arctic Circle to the Mediterranean, as reported in The Archer.

So on 11 May, Nick will get in the saddle in East Finchley and set off towards Denmark, hoping he can ultimately make it to the US with his bicycle in time for the match kick-off on 23 June.

Nick will first head to Harwich to take a ferry to the Hook of Holland. From there he will begin a couple of weeks of cycling across the flatlands of

the Netherlands and Germany before hitting the Hærvejen, the ancient 'Ox Road' through Denmark, to the northern ferry port of Hirstals.

From Hirstals, it will be a three-day ferry journey to Seydisfjörður in eastern Iceland. Here, Nick's cycling buddy Pete will join him, and they will head west across southern Iceland, passing glaciers and icebergs,

and more than likely having to stop to sit out the notorious 70mph headwinds that rage there. After a couple of days' break in Iceland's capital Reykjavik, Nick will fly on alone to Qaqortoq, southern Greenland, then three more days on a ferry to the capital Nuuk. From there, it's a short flight to Iqaliut on Baffin Island in Inuit Canada. Greenland has

no roads between villages, and sea ice in Canada will determine whether polar bears are still about, which will limit cycling! If everything is on track, Nick will fly on to see family in Montreal, then travel mostly by bike to get to Foxborough, west of Boston, for the match. All in all, as the raven flies it will be about 9,000km, with about 3,000km of cycling, 4,000km

on ferries and 2,000km on planes. That's a long way to go for a turgid 0-0 draw. Fingers crossed for Nick and England!

As always, Nick is pleased to highlight the work of the Wheelchair Football Association. You can find out more and donate at <https://donate.thewfa.org.uk/campaign/wfa/gift-aid/>

Keepsakes keep the recycling going round

Local artist Harriet Connides was delighted to read that The Archer newspaper is printed on recycled paper and she has a way of ensuring that once her copy is read there is still plenty of life in it.



No waste: Harriet's artistic creations

Harriet takes old newspapers, used envelopes, card and junk mail, and tears them up, mixing the strips with PVA glue to make papier mache before applying it to old yogurt pots and plastic drinks bottles.

She paints the results in acrylic, sealing them with gloss varnish, to make 'keepsake cups', vases for dried flowers and grasses, jewellery and as bases for Christmas baubles and pet portraits. She recently completed a commission of Mokey, a pet chicken.

"I'm constantly horrified by the waste that we generate, and the fact that many everyday objects, plastic pots and bottles, still aren't easy to recycle. This is my way of trying to save some



of them from ending up in landfill," said Harriet. You can see more of Harriet's work on [@Instagram @harrietconnides](https://www.instagram.com/harrietconnides) and on Facebook at Harriet

Represent Barnet at London Youth Games



Girls, do you have what it takes to represent Barnet Borough in the London Youth Games next month?

Finchley-based community football club Kick Action is looking for players in year nine or 10 to try out for their team in May.

Contact Coach Kafele on 07985 554838 or email kassfc@outlook.com

New puzzle: Re-Griddable

Re-Griddable is a twist on the free daily online game grid-dable.co.uk created by two East Finchley residents, Stuart Miller and Matt Robinson. There may be more than one solution to each Re-Griddable but there is definitely at least one, which comes from a maximum scoring game of Griddable.

If you get stuck the official Griddable word-checker may help (griddable.co.uk/word-checker).

If you like playing Griddable online, why not join the East Finchley Leaderboard? Go to Groups on the site and use code BUJRM4.

Re-Griddable
No.3

Place the letters to create eight 4-letter words (four left-to-right & four downwards).

A E L M R S S T

		O	T
T	I		
		E	N
T	E		

Turn to page 11 for this month's solution



Michael Rosen: Still hip after all these years

By Ruth Anders

Funny, mercurial, moving, heartbreaking – all these characteristics apply to the prolific award-winning author Michael Rosen. On a dark evening in March, the warm and welcoming Katrina Thompson hosted 20 or so enthusiastic guests to meet local resident Michael in the cosy back room of the Muswell Hill Books & Parlour.

At almost 80, and after nearly dying from Covid, he is still writing books and poems for children and adults, working as professor of children's literature at Goldsmiths, presenting Word of Mouth on BBC Radio 4, visiting schools and planning an extensive one-man tour.

"I'm still doing hip young groovy things," he added with a twinkle. His books for adults were flying off the counter before the evening began.

Hannah Masson, sister of the bookshop's owner Chris, opened the proceedings by reading some of her witty and original poems, and then Michael launched into tales of his childhood in Pinner where "my parents came from something called 'Before the War'". His writing career started at age seven with a competition-winning tale about 'Solomon the Cat'. He told us about the story behind his recovery from the near-death experience with Covid, and his resulting book *Many Different Kinds of Love*.

He described some of the Jewish food recipes his mother made, and the story of eating hot potato that has made him famous as a meme worldwide. "I even get stopped in the street in China," said Michael. "Just look up Michael Rosen Hot Food." There were fond memories about the difficulty



Tales to tell: Michael Rosen in Muswell Hill. Photo Mike Coles

of opening corned beef cans, alongside tales of sadness relating to the death of his son Eddie, which inspired his book Michael Rosen's *Sad Book*, engaging for both children and adults.

He mentioned his relationship with his illustrious illustrators, including "the formidable" Helen Oxenbury. We heard about how children respond to his poems and, as he said, "The great thing about kids is that there are always new kids, so my old routines can keep going."

We left the shop cheered and inspired by our time with Michael and wish Muswell Hill Books & Parlour every success with their upcoming events. See www.muswellhillbooks.co.uk.

Music and beer in Muswell Hill

Two local professional musicians are hosting an evening of tunes on Sunday 24 May from 7pm at Muswell Hill-billies Brewery Taproom in Ave Mews, Muswell Hill, to raise money for Refugee Community Kitchen.

Violinist Kath Roberts and guitarist Peter Thornton both play in the West End, professional orchestras and the London folk scene. Expect music from folk to Stevie Wonder to Gershwin. Refugee Community

Kitchen serves nutritious food without judgement to those fleeing war, poverty, persecution, and climate change, living in northern France and the UK. Tickets are on sale at RCKfundraiser.eventbrite.co.uk with a suggested donation minimum of £10 per ticket.



Professional musicians play guitar and violin



Fantastic: Author A.Y. Chao, right, with friends at her book launch party. Photo Justine Csaky

Author expands her mythical universe

By Justine Csaky

Bestselling author and East Finchley resident A.Y. Chao celebrated the publication of her latest fantasy novel with a 1930s-themed party in Soho.

Paris Celestial is set in 1830s Lijiang and 1930s Shanghai and Paris, places inspired by her time as a student in Paris and China, while the humour is drawn from her love of quirky comedy à la Saturday Night Live, *Kids in the Hall* and *The League of Gentlemen* as well as the more recent *What We Do in*

the Shadows. A sequel to her Sunday Times bestselling debut *Shanghai Immortal*, it follows the adventures of Lady Jing, a hundred-year-old half-fox spirit, half-vampire with a bad attitude. All Lady Jing wants is to escape Shanghai and spend time with her mortal beau Tony Lee.

The alternate-mythology historical fantasy is a Marie Kondo-ing of influences from Chao's life, including deities and creatures from Chinese mythology. Published by Hodder & Stoughton, the novel is available now in bookshops and on Amazon.

Join a creative community in East Finchley

Would you like to be part of a local cooperative artistic community? The East Finchley Open Artists Group (EFOA) is currently inviting practising artists from all disciplines to join.



The group holds meetings, invites speakers and organises social events including a Christmas party. It offers support groups for various artistic disciplines, but most of all it offers a creative community and friendship.

EFOA also supports local charities, proposed by members. This year it is raising funds in support of Community Focus, an arts centre for adults and children with disabilities, autism or anyone who feels they need extra support.

The group's largest annual event is the Artists Open Houses at the end of June, an art trail of member spaces around East Finchley and surrounding areas. This year the event takes place on Saturday 27 and Sunday 28 June, and Saturday 4 and Sunday 5 July, from midday to 6pm. For more information or to join via an online application, visit eastfinchleyopen.org.uk

COMING SOON AT ARTSDEPOT

GARY STEWART PRESENTS PAUL SIMON'S GRACELAND
Sat 9 May

PULMAN & STILGOE: HOORAY FOR HOLLYWOOD
Thu 14 May

TALES FROM ACORN WOOD
Fri 22 - Tue 26 May

STILL POINTLESS: BALLETTYBOYZ AT 25
Thu 4 & Fri 5 Jun

...and lots more!
See the full line up at artsdepot.co.uk

arts depot Box Office: 020 8369 5454
artsdepot.co.uk
artsdepot, North Finchley, N12 0GA



Letters

Show some respect

Dear Editor,

I have had the great fortune to live in East Finchley for almost 12 years, in Church Lane, and very close to our beloved Italian restaurant, Il Piccolo Villaggio, formerly La Rugoletta.

Yesterday I picked up no fewer than five separate dog poos from my front garden. This afternoon, whilst preparing lunch, from my kitchen I spotted another 'lingerer' outside in that all too familiar, stationary pose, a lead in one hand and a mobile phone pressed to the ear in the other.

I ventured outside to express my displeasure at people who allowed their dogs to poo in my garden, an off-street parking space at the same level as the public pavement. He accused me of shouting at him without justification as he would "never allow his dog to do that sort of thing".

Whereupon his dog spread its rear legs and prepared to do

exactly that! Had I not been there, there would have been yet another stinky deposit for me to dispose of. And yet I was made to feel as if I was the bad person.

I thought we were a respectable lot in East Finchley but clearly that is not the case. Why do dog owners even allow their pets to poo in someone's garden if they are not prepared to pick it up and take it away? Am I supposed to install CCTV? Put up signs? Install a poo bin?

Come on guys, show a little respect. How would YOU like it if it was done to you?

**Joss Woolf,
Church Lane, N2**

**Send your letters to:
news@the-archer.co.uk**

Letters without verifiable contact addresses will not be printed. Contact details can be withheld on request at publication. We reserve the right to abridge letters for reasons of space.

Music prize

The Youth Music Centre is holding a special memorial prize festival at Hampstead Garden Suburb Free Church on Sunday 7 and Sunday 21 June in honour of its former patron Georgy Pauk.

Young musicians will play in front of distinguished judges before all prize winners perform with a professional orchestra.



Inspiring: Georgy Pauk

Georgy Pauk believed that children and young musicians need to be exposed to meaningful and high-quality compositions early in their lives.



Georgy Pauk

The Concerto prize day on the afternoon of 7 June, and the prizewinners' concert on 21 June at 5pm, are open to the public. For more information visit www.youthmusiccentre.uk.

Re-Griddable solution from page 9

Across:

SLOT
TIRE
AMEN
TEST

Down:

STAT
LIME
ORES
TENT

Get to grips with the news



Thanks to former Leopold Road resident and Archer deliverer Bettie Cude for sending us this photo of her great-grandson getting a grip of all the news from N2. Five-month-old Atlas lives in Camborne in Cornwall but enjoys catching up on the latest from East Finchley when Bettie sends a copy of the paper to his grandad and her son Colin every month.

Bettie lived in the same house in Leopold Road for more than 60 years and delivered The Archer for about 30 years.

She has moved back to her roots in Wales now but still has many connections in East Finchley and makes sure she still gets her copy each month.

Ask Joy: Why do I have a low libido?

Joy is a trained counsellor and she can help you tackle issues that matter to you. No problem is too big or too small to be shared. Every email will be answered by Joy, and we will anonymise those that go into print, so confidentiality is assured.

Joy trained as a counsellor in the 1990s and worked in education for 20 years with young people and parents. She has many years' experience of listening and problem-solving. It's always good to talk, so don't hesitate to reach out.



Design by @archnote

Email Joy at askjoyatthearcher@gmail.com.

Dear Joy,

I hope you can help me. I'm a 55-year-old man and over the last year I've gone off intimacy completely. My wife is attractive and I still love her, but I'm just not interested in her sexually. She's getting fed up with me making excuses and I'm worried she'll start looking elsewhere.

I think maybe she suspects me of being unfaithful but although I've had plenty of opportunity, I haven't acted on it.

I never imagined I'd become so uninterested in sex and I'm unhappy about it. It makes me feel less of a man. I'm also worried that if nothing changes, my marriage will be over and I really don't want that to happen. L.

Dear L,

Please know that you're not alone – it's such a common issue, but also a hard thing to talk about, particularly for men. The message society gives us is that men are always up for sex, which may add to the sense of shame and inadequacy surrounding this issue.

I'm unclear whether you've tried to have a conversation with your wife, but I think that really needs to be your first step. She may be imagining all sorts of scenarios, none of which will come close to the truth. It can be difficult to start the conversation, but once everything is out in the open, you might feel a little better.

I would also urge you to speak to your GP. There are many medical conditions that can impact on your desire and ability to have sex,

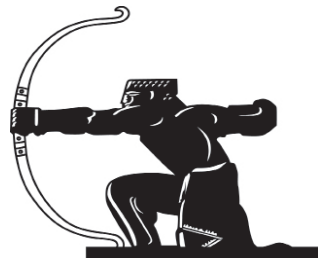
so eliminating these is important.

If there isn't a medical explanation for your low libido, speaking to a therapist could be beneficial in helping you get past any mental blocks that may be causing the problem.

I know that none of these conversations is easy, but with a little courage and a lot of honesty, I believe you have a good chance of turning this situation around. Good luck!

Useful resources:

Go to the website www.nuffieldhealth.com and in the search bar type 'low libido in men' for a helpful article.



Class act: Former Martin School teacher Julie Taylor, left, with pupils at the Tryamboli school, who demonstrate their good grasp of English. Photos Jane Conway

Twinned schools share stories and lessons

Earlier this year **Jane Conway** returned to Kolhapur in India for her annual visit to Tryamboli School, which has been twinned with Martin Primary School in East Finchley for 14 years. Here she recalls her latest trip.

On my visit to Kolhapur this time, I was able to hand-deliver postcards made by Year 6 pupils at Martin Primary, with thoughtful illustrations and messages celebrating the link between the two schools.

It was lovely to witness the excited response from the Tryamboli children as they pored over the cards together. Capturing this moment on camera, the pictures were in time to be included in the Martin School newsletter, a copy of which was immediately printed out and pinned up on the Tryamboli School noticeboard. Children at both Tryamboli and Martin Primary Schools have enjoyed sessions using the Runaway Chapati, listening to, and per-

forming the story using puppets and props. Photos of the sessions have been exchanged between the schools, helping to nurture the sense of connection and shared learning.

Ten years ago, teachers Shona Glacklin and Julie Taylor from Martin School visited Tryamboli to run Jolly Phonics workshops. These were greatly enjoyed by children and staff alike and introduced a method of learning to read that has become firmly embedded in the

school curriculum.

Julie, who now works for The Children's Literacy Charity, returned to Tryamboli in February this year to run another Jolly Phonics programme with the Year 2 class, bringing with her 50 mini whiteboards with pens and rubbers for each child. This resource was new to the school and the children were delighted to be initiated into the use of this highly interactive learning tool.

Every child was instantly engaged in writing sentences and collaborating to proofread each other's work and correct mistakes. Another advantage of this visual method is that with classes of up to 50 pupils at Tryamboli, whiteboards allow

the teachers an instant method for checking work and monitoring learning.

The addition of a permanent library at Tryamboli School, with its colourful murals depicting the wonder of books, has created a special place where children can develop a love of reading and storytelling. In addition, two newly constructed individual washrooms and a water filtration system have significantly enhanced the school environment.

It is a joyful experience to see how the school has grown and blossomed over the last decade, stimulating an enthusiasm for learning in a happy and dynamic setting.



Twin schools: Tryamboli pupils with postcards sent from their friends at Martin Primary in East Finchley

ART MEETS BEAUTY

NINY BEAUTY SALON COLLABORATES WITH ARTPLAND

The best-rated beauty salon in North London
 Welcoming you in East Finchley
 130 East End Road, N2 0RZ - 07384478764

www.ninybeauty.co.uk
 www.artpland.com

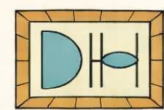


Twin schools: Tryamboli pupils with postcards sent from their friends at Martin Primary in East Finchley

The Archer online

Did you know you can catch up with past issues of The Archer online? Every edition since the start of 2000 is available on our website at www.the-archer.co.uk.

The site also gives information on advertising in our pages and how you can contribute to the paper.



DAVID HILLEL
OPTOMETRIST

Offering an enhanced eye examination
 and a comprehensive hearing care service

Contact us today to book an appointment

Tel: 020 8444 2233

Email: office@davidhillel.co.uk

119 High Road,
 London, N2 8AG

Bela Shah
 Practice Partner

